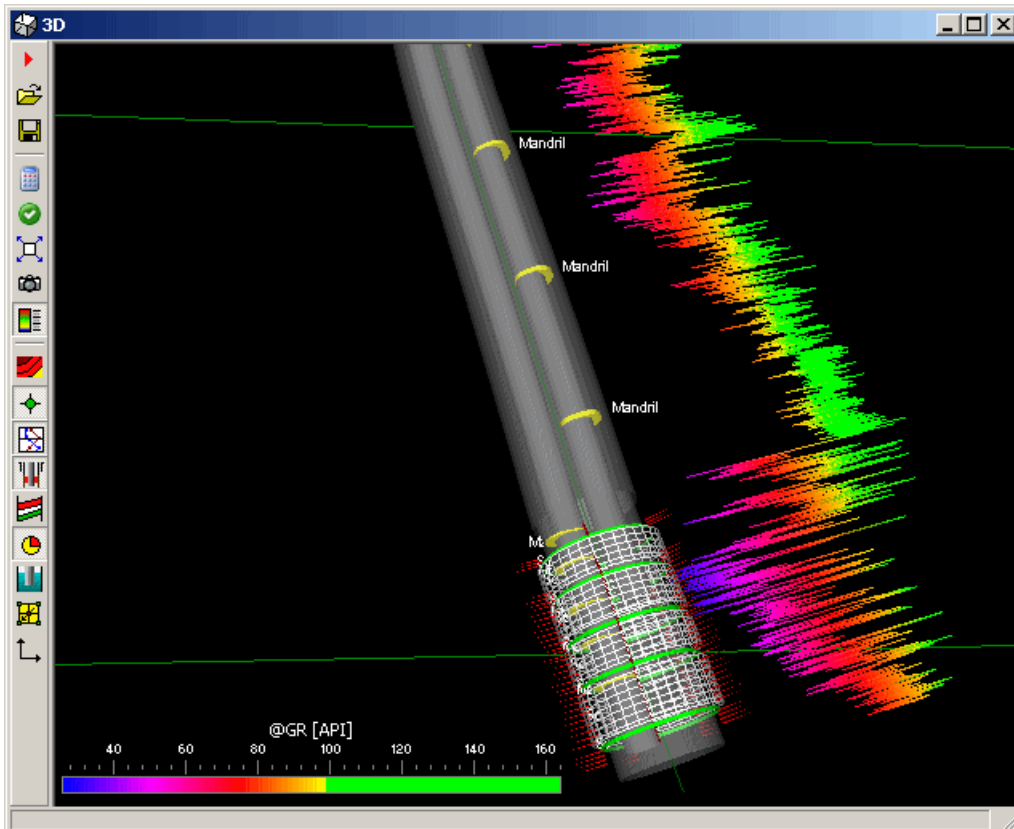


## New 3D window

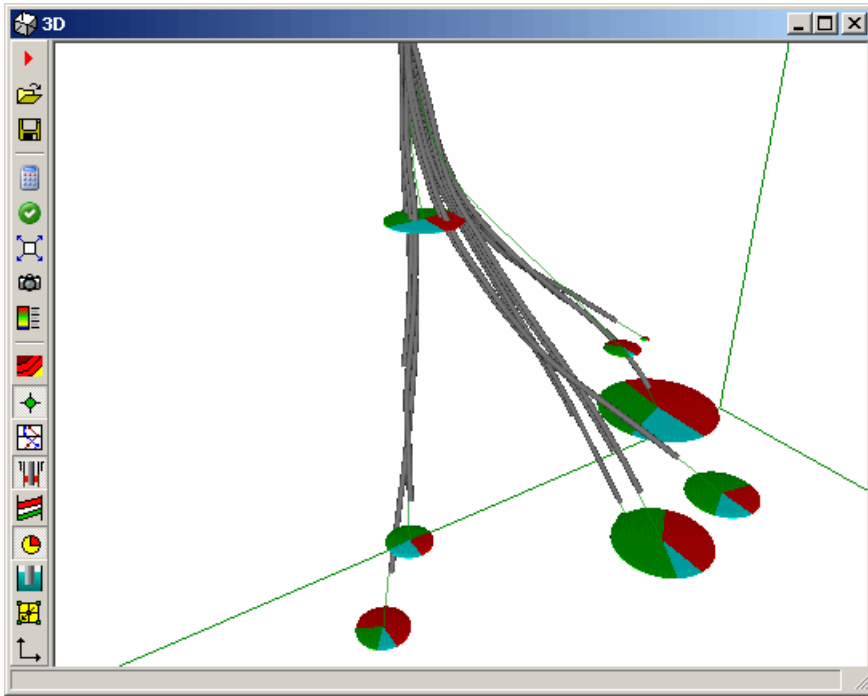
The user interfaces has been modified as well as some of the plotting functions, thus improving the module general performance. Dynamic plotting has also been modified and now the date changes are drawn completely smoothly.

In addition to this, multiple-completion wells are plotted with every single production line.



## Bubbles

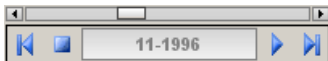
Two new formats have been added to the preexisting ones: pie and structurals. The former allows the user to select several variables and represent percentages. In this case, the radius is computed from the total sum; therefore, the variable selection must be done carefully. The latter draws the bubbles in annular format over the current structural surface.



## Date control

---

Dynamic data such as injection patterns, bubbles and fluid levels are refreshed smoothly when the date is changed. To do so, a date control panel has been added which allows, among other things, to automatically play the selected options.



### Run

This button starts the reproduction.



### Stop

This button stops the reproduction.



### FF

Jumps between dates (End of History and end of Project)



### RW

Jumps between dates (End of History and beginning of Project)

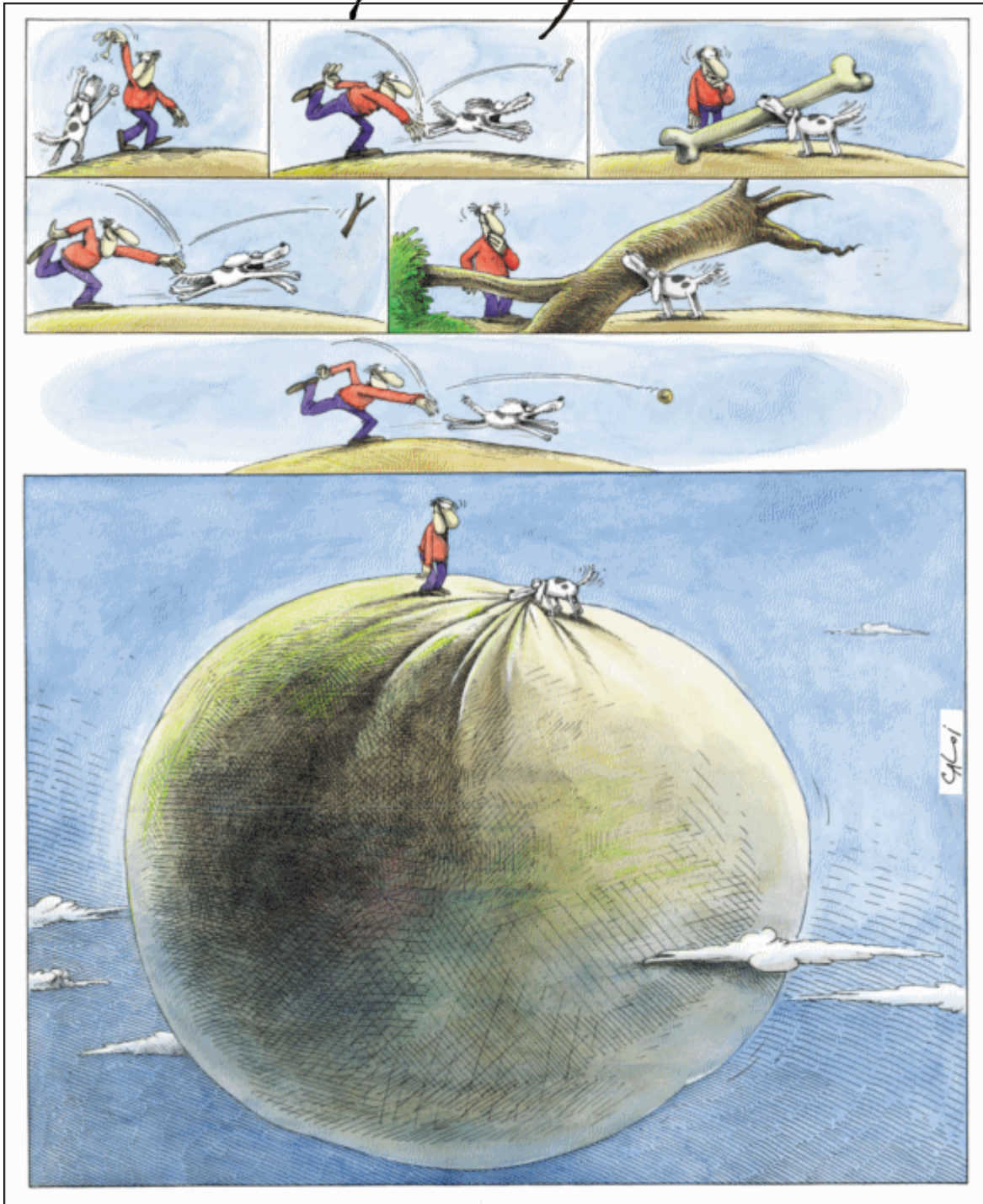
## Templates

---

Settings templates can be saved and loaded and since they are saved as free files, they may be uploaded to any other Sahara project.

# Caloi

Reproduction authorized by Caloi



Reproduction forbidden