

## Chemical Analysis

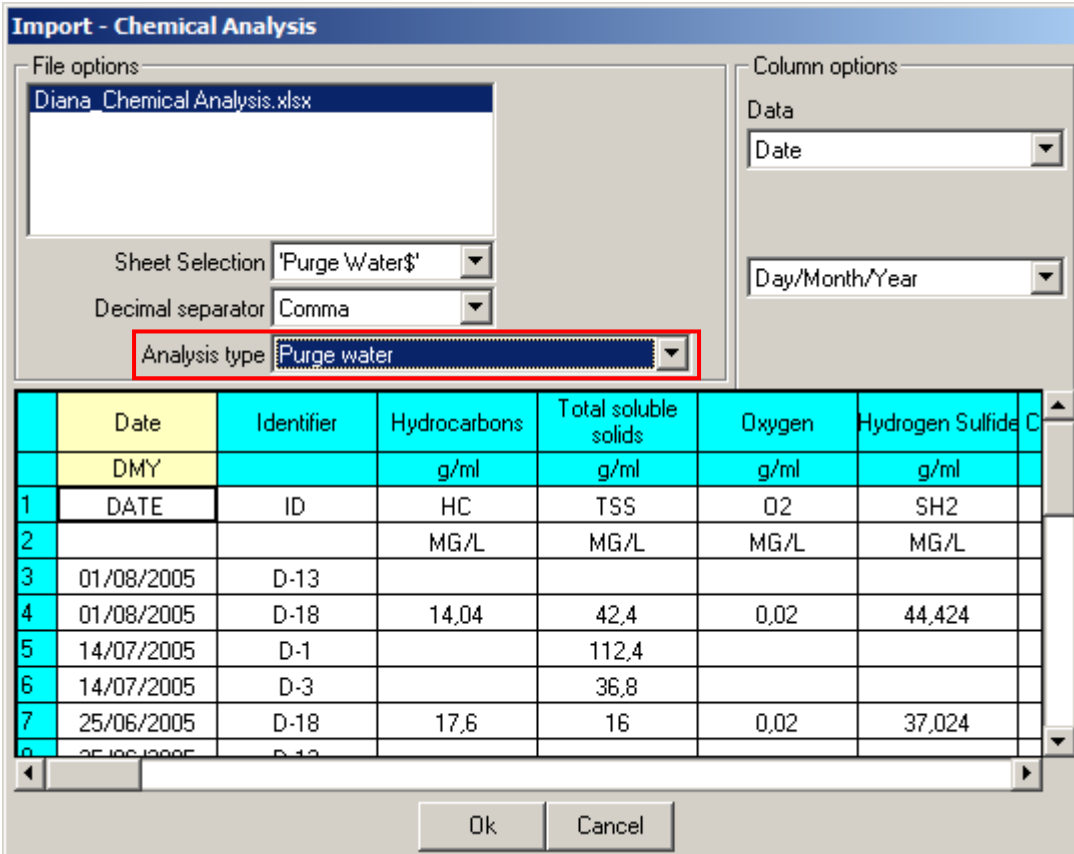
Now you can analyze your chemical analysis data in Sahara. The data may be accessed from the Productions window or using Bubbles in the Map window.  
The data can be associated both to wells and Facilities.

### Importation

The data can be imported in Sahara both by using a file and by using templates to connect to a database. In both cases, the analysis types available are: Fresh Water, Purge Water, SRB Bacteria, NRB Bacteria, Oil, Solids, Physicochemical, Gases, Residuals, Scalings. The user can choose which variables to import in each analysis type.

The variables belong to the group "Chemical Analysis". The user cannot create new variables, but the offered variables can be consulted and edited in **Edit > Variables > Group: Chemical Analysis**.

- **Project > Import > Chemical Analysis...**

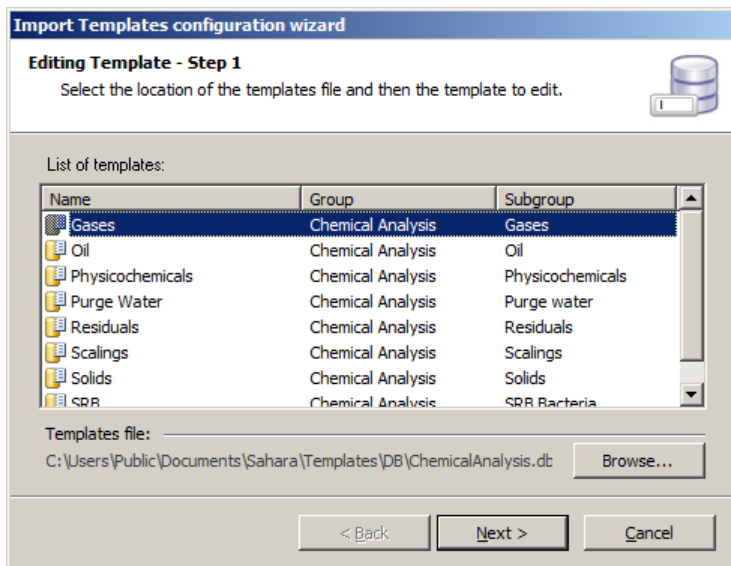


	Date	Identifier	Hydrocarbons	Total soluble solids	Oxygen	Hydrogen Sulfide C
	DMY		g/ml	g/ml	g/ml	g/ml
1	DATE	ID	HC	TSS	O2	SH2
2			MG/L	MG/L	MG/L	MG/L
3	01/08/2005	D-13				
4	01/08/2005	D-18	14,04	42,4	0,02	44,424
5	14/07/2005	D-1		112,4		
6	14/07/2005	D-3		36,8		
7	25/06/2005	D-18	17,6	16	0,02	37,024
8	25/06/2005	D-13				

- **Edit > Configuration > Database Templates > New...**

One template for each of the different analysis types will be required to import the data. All of them may be saved in a single .dbt file.  
The template creation is as usual with any other type of information.

**Example:** Edit view

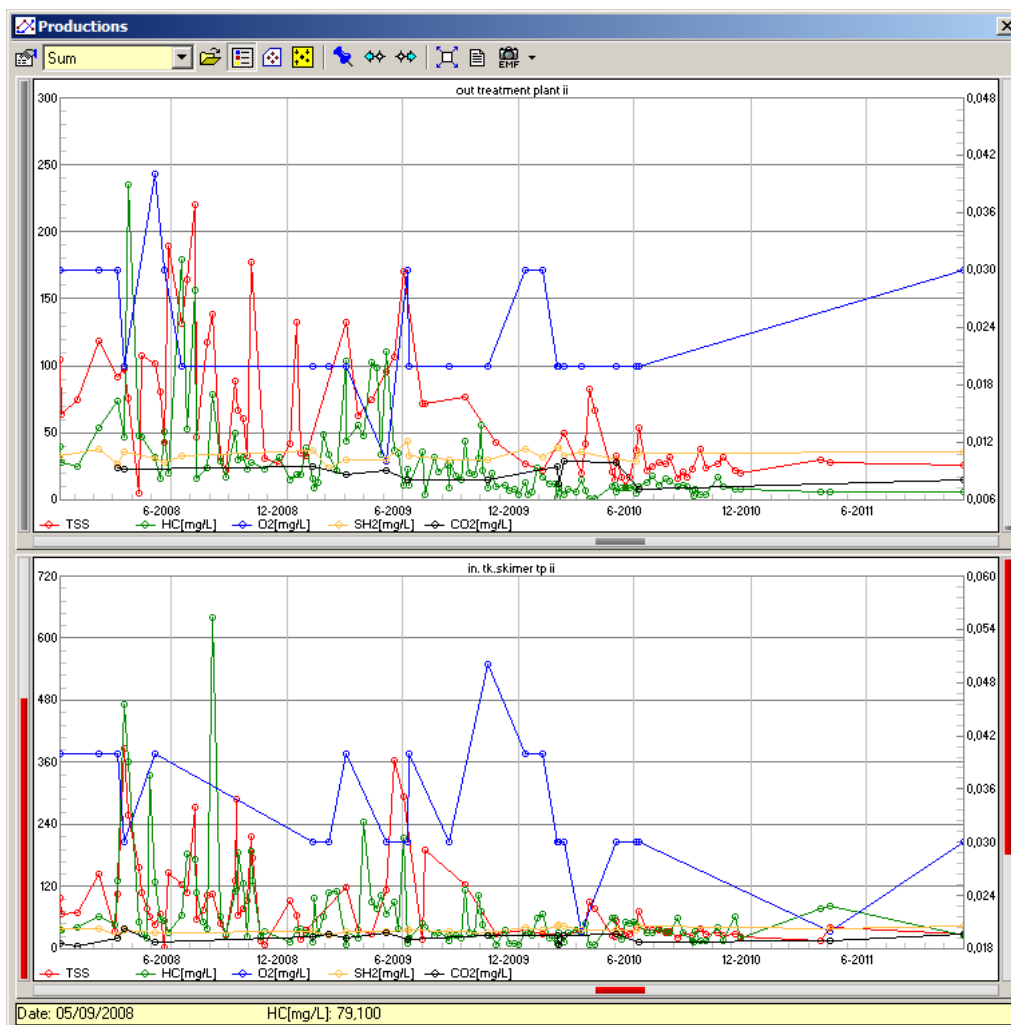


Once the user has finished creating the templates, the importation process may be completed going to **Project > Import > Database Templates...** or using the scheduled tasks in **Edit > Configuration > Database Templates > Scheduled tasks...**

## Data visualization in Productions window

The visualization in the Productions window is similar to any other data. When selecting the variables, only those with associated data will be available to be chosen. The variables will be shown by analysis type.

**Example: Purge water variables**



## Data visualization in Map window

All the data imported as Chemical Analysis can be plotted as bubble maps in the Map window. All bubble formats are available to be used.

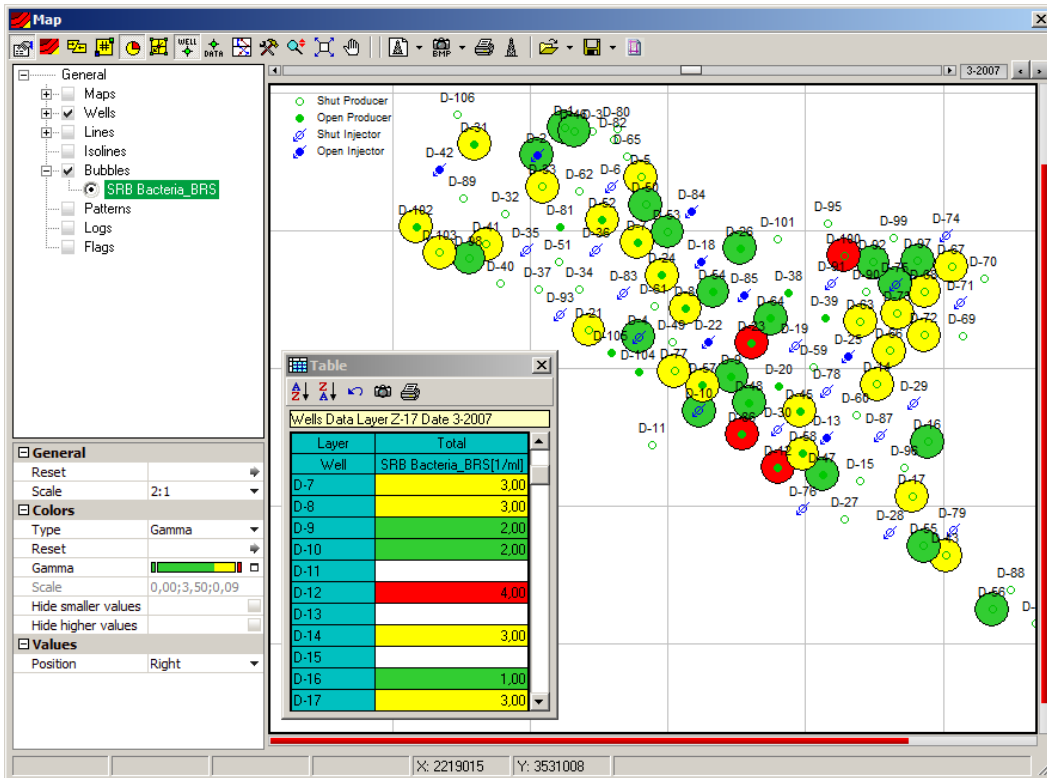
### Example 1:

Sulfate-reducing bacteria variable is plotted as Simple Bubble using color Gamma.

Additionally, the Data report is consulted.

When plotting chemical analysis variables using bubbles and a gamma, the report will show the colors corresponding to the configured gamma.

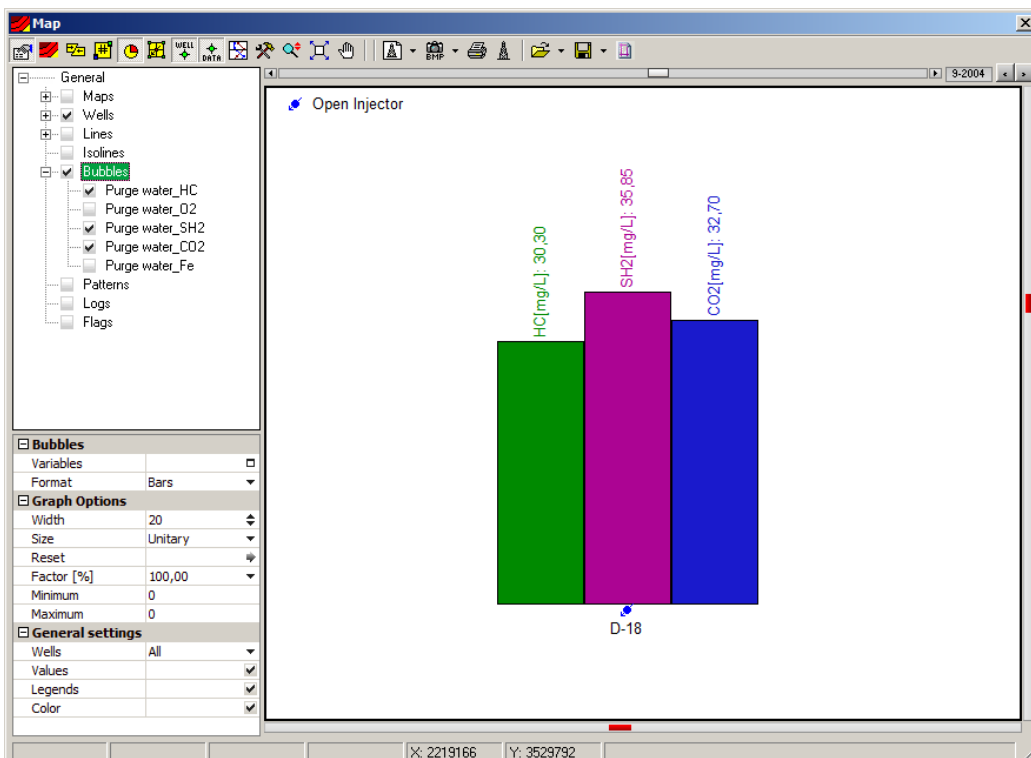
This configuration is particularly useful to detect outrange values and monitor the analysis.



### Example 2:

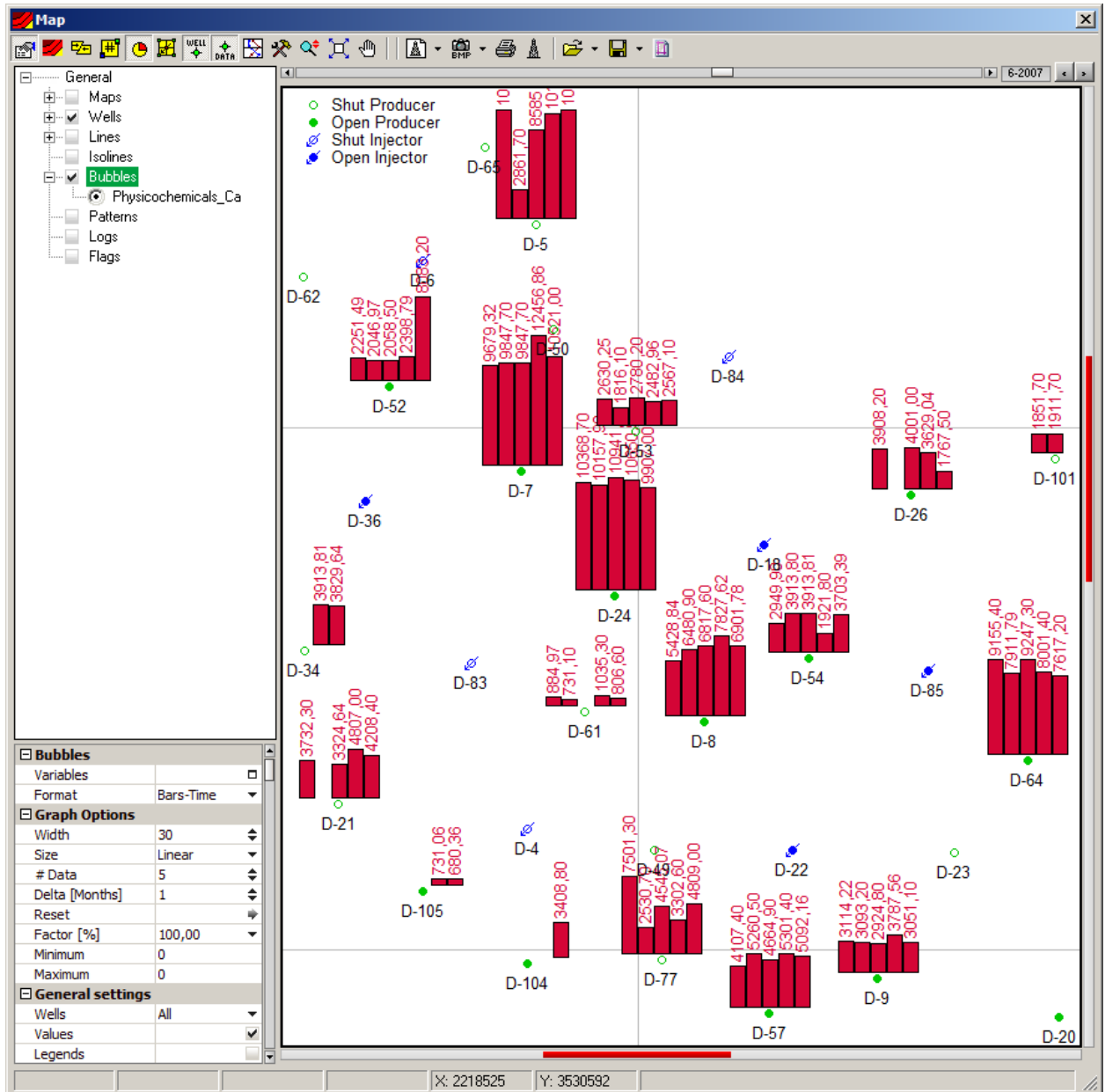
Variables belonging to Purge water analysis (Hydrogen Sulfide; Carbon Dioxide and Hydrocarbons).

Bubbles in Bars format at 09/2004.



### Example 3:

Evolution in time of Calcium is analyzed using the special bubble format "Bars-Time". In particular, the configuration is one data per month (Delta), comparing the current date and 4 months back in time (#Data).



# Caloi

La reproducción de este dibujo es autorizada por Caloi



Reproduction forbidden