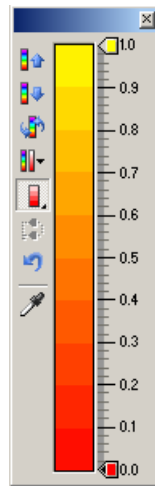


Color palette

There is a new color palette available in some Sahara windows that permit to generate the color scale each user wants, to represent the data.

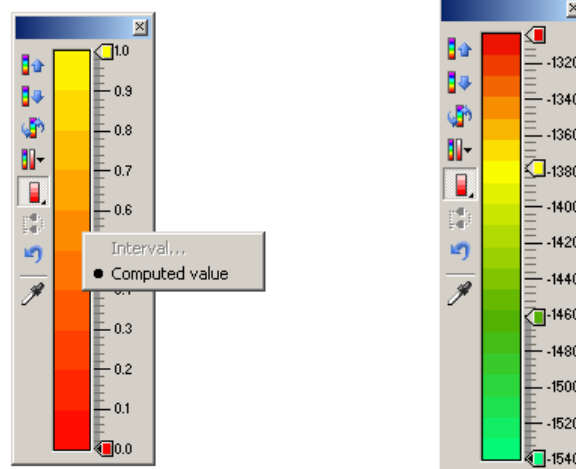
The user can edit extreme values, and also create markers in middle points of the scale, dividing it in smaller scales. In addition it has a dropper tool that allows to take a color directly from the screen.



The palette handles the following parameters, one of which has to be left free (computed value):

- Maximum value
- Minimum value
- Quantity of colors
- Step between colors

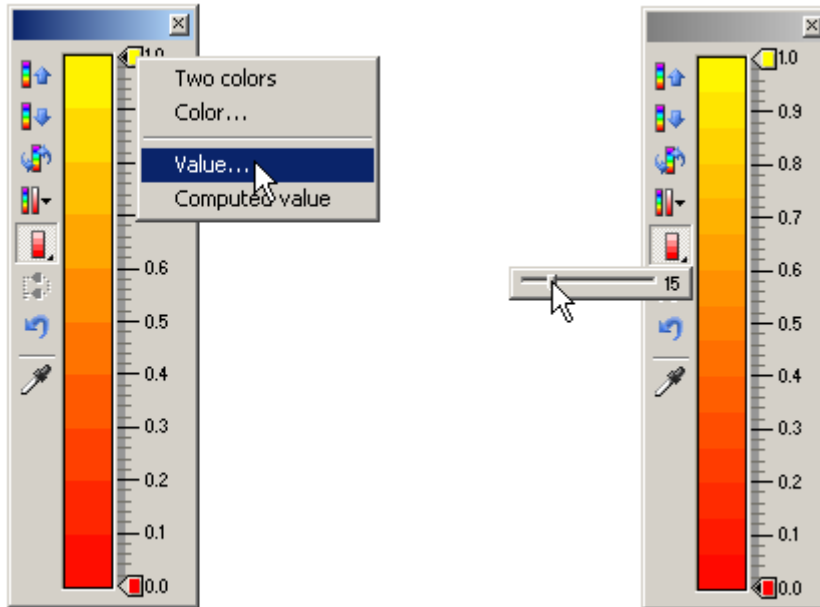
E.g.: If the user wants to visualize values between 0 and 1 with a step of 0.1, the quantity of colors (computed value) will be 10. Another way, if the user wants to visualize the values between 0 and 1 with 20 colors, the step (computed value) will be 0.05. Similarly, the maximum or minimum can also be the computed value.



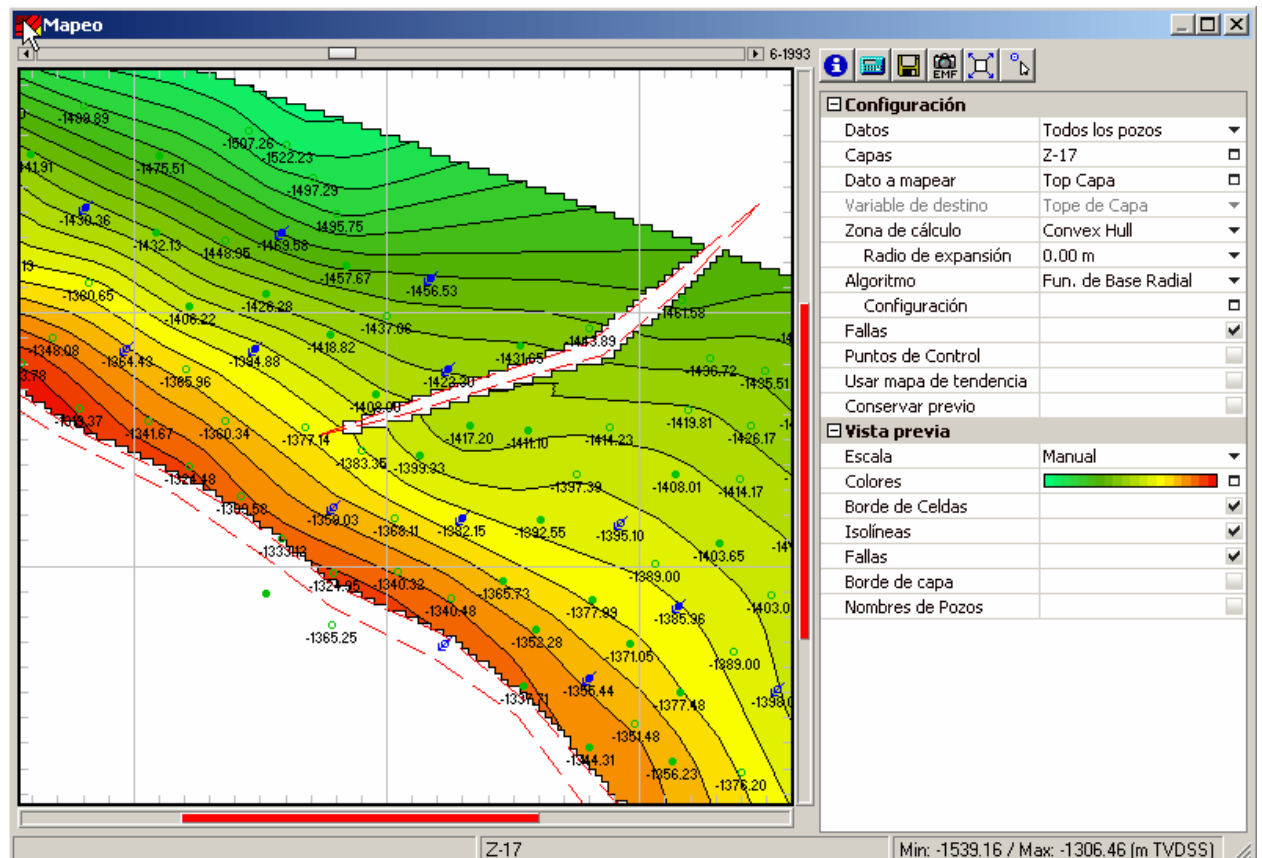
The **Automatic** mode only allows to modify the colors, the maximum and minimum values are calculated and can't be modified. Instead, in the **Manual** mode all the edit options are available, and the maximum and minimum values won't be modified automatically.

Manual Scale

The user can edit the extreme values of the scale by right clicking on them, then selecting the option **Value** and entering the wished value. The step can be modified by right clicking on the palette and the number of colors can be easily modified using the slider available above the palette icon.

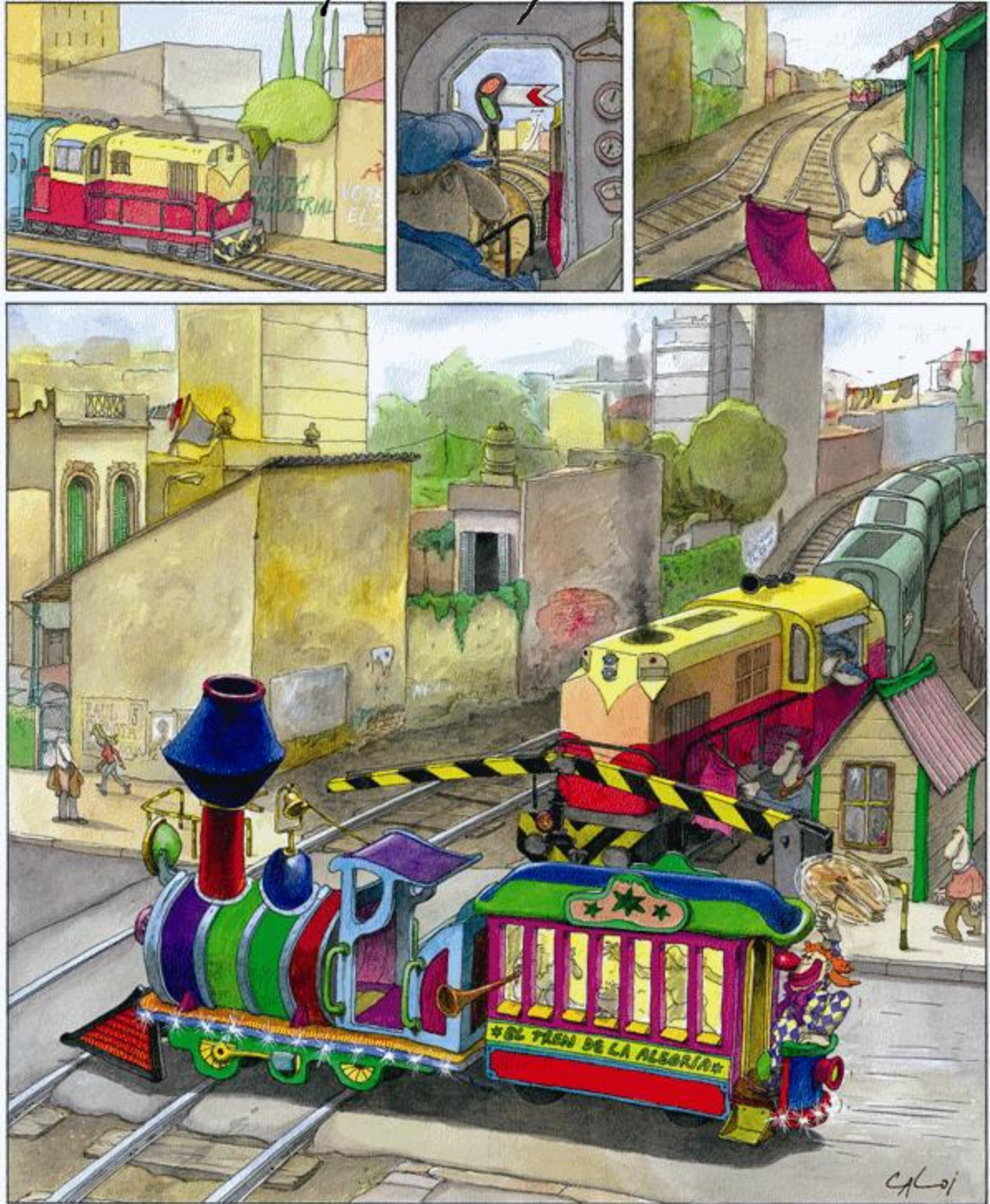


By right clicking on a color marker, there is also the option Two Colors that allows to assign two colors to that value. This is particularly useful when talking about maximum and minimum. The values above and below the marker will be shown in a different color.



Caloi

La reproducción de este dibujo es autorizada por Caloi



Prohibida su reproducción