

Create and use templates to connect to databases

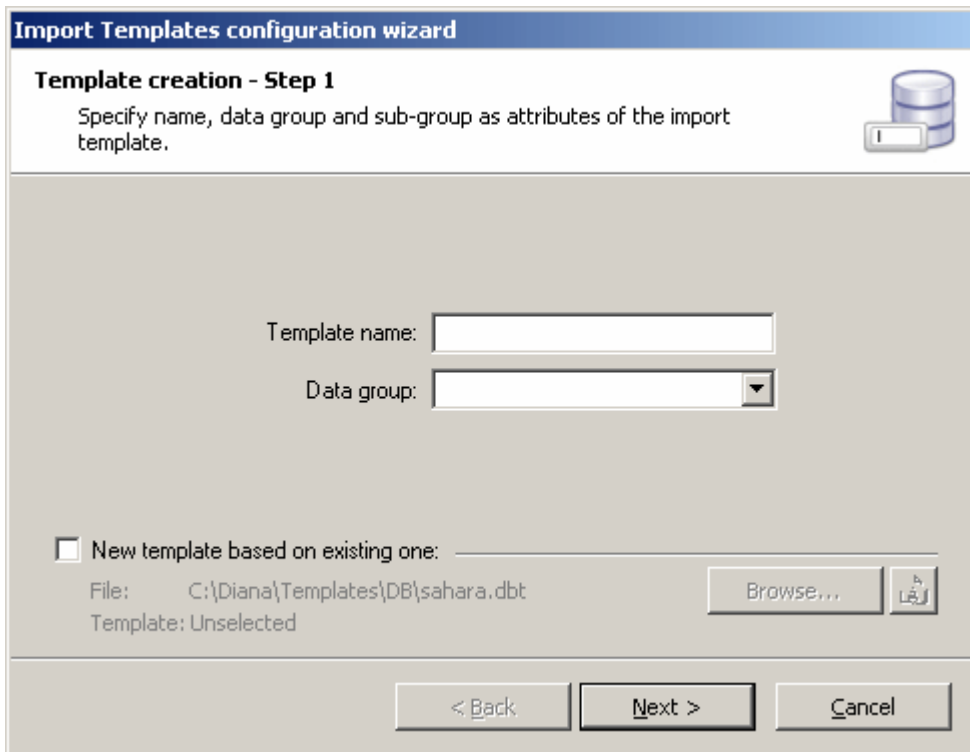
✓ Templates

Sahara can connect to most database engines in the industry, using templates to import and update information.

✓ Creating Templates

You can create and edit templates in Sahara with the **Import Templates configuration wizard**, found in the following menu, **Edit > Configuration > Database templates**. This tool will guide you step by step through the process.

Step 1



Import Templates configuration wizard

Template creation - Step 1

Specify name, data group and sub-group as attributes of the import template.

Template name:

Data group:

New template based on existing one:

File: C:\Diana\Templates\DB\sahara.dbt

Template: Unselected

In this window you have to indicate the data group corresponding to the data you want to import with the new template, and the template's name for future reference.

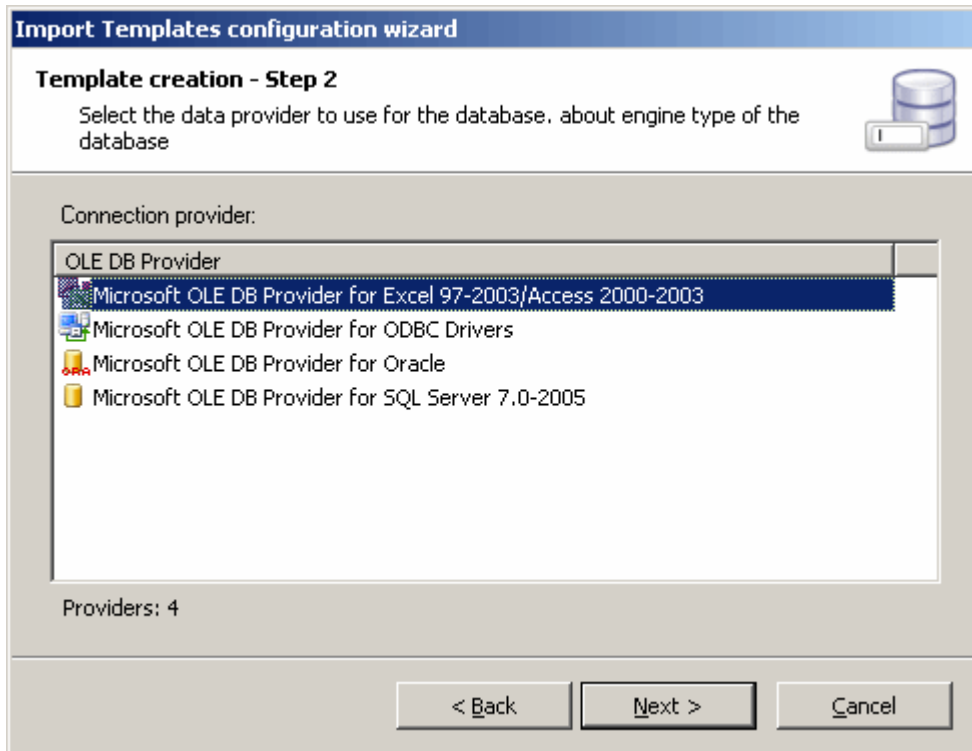
If the template will be working with production data, then you must also select which scenario you want it to be imported to.

Choosing "New template based on existing one" allows you to select an already existing template to have your default choices in the following windows match those of the chosen one, making it faster to create new templates.

Step 2

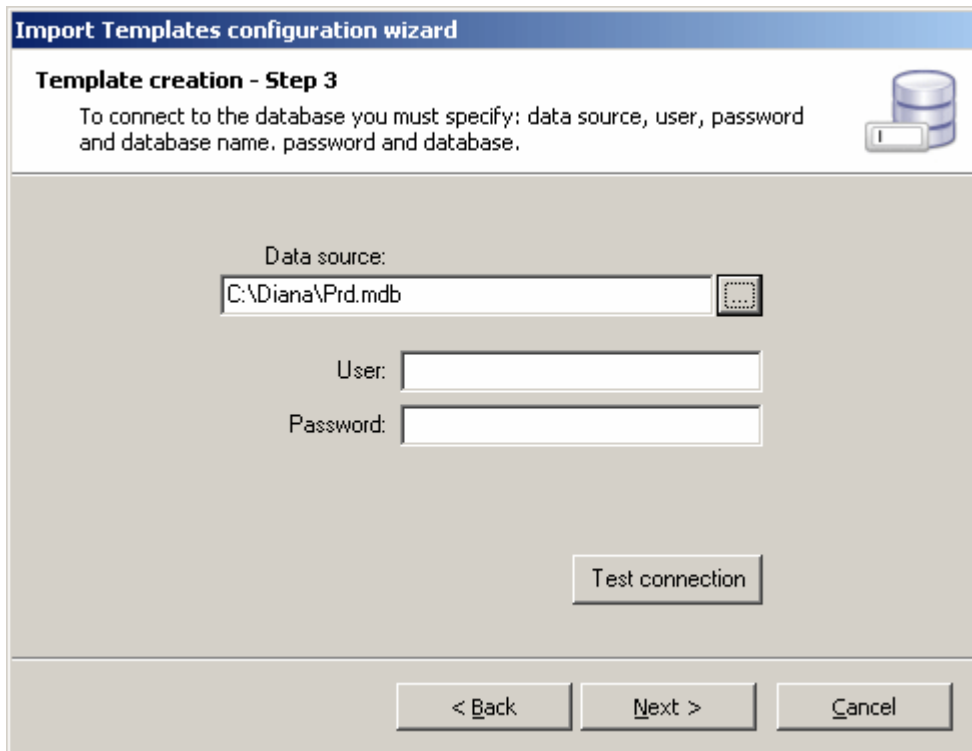
This window shows a list of all the data connection providers detected in your PC, and allows you to select which one you want to use.

For example, if you are using an Access database, you should use “Microsoft OLE DB Provider for Excel 97-2003/Access 2000/2003”, or “Microsoft OLE DB Provider for Oracle” for Oracle databases.



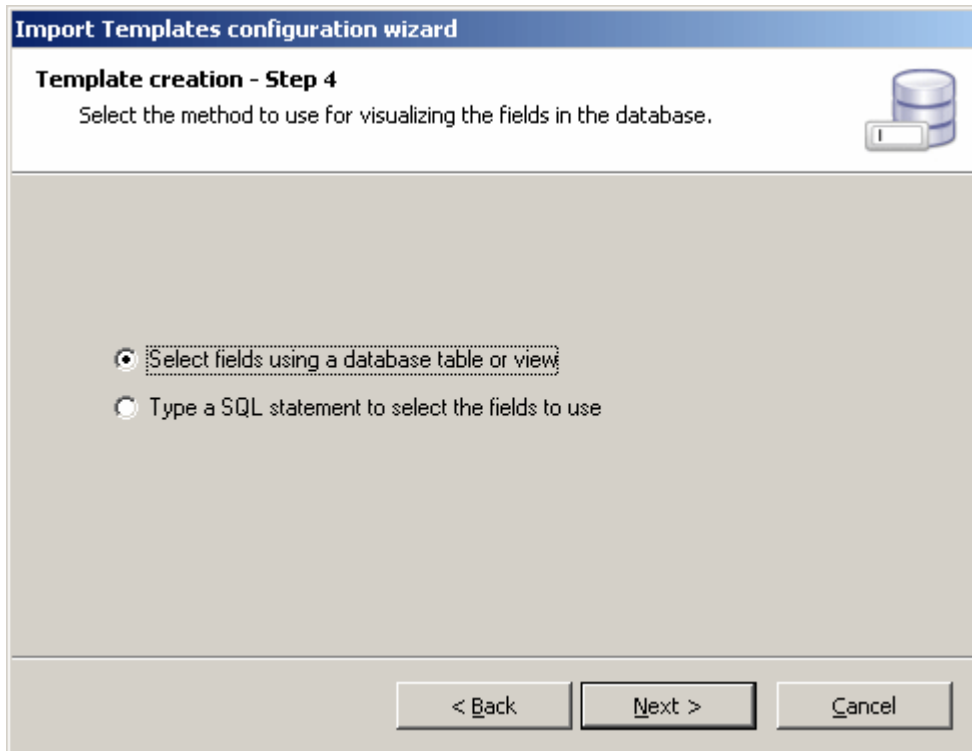
Step 3

You have to select the database you will use as the source of the data. **Test connection** allows you to verify the connection to the database is working, and eventually if your Username and password are correct.



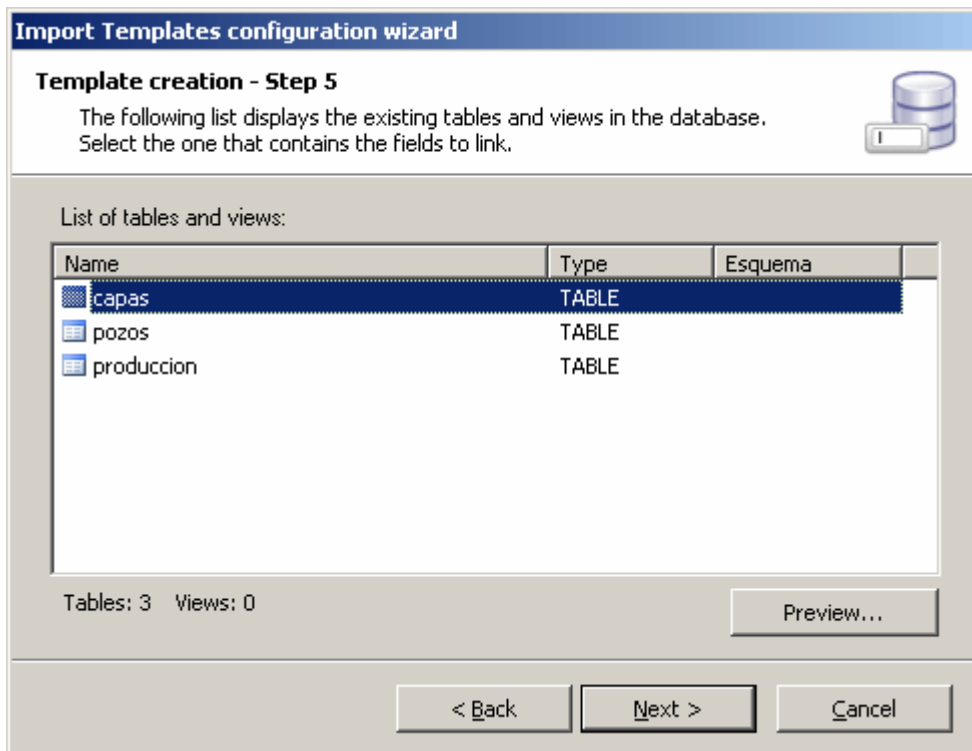
Step 4

Here you can select between accessing the database through preexisting tables or views, or to type the SQL sentence that is needed to obtain the data you need.



Step 5

If you choose to use preexisting tables or views, the following window will show their names and you will be able to select the appropriate one.



Selecting **Preview...** shows the first hundred records of the table or view, and may help you find the desired one.

Step 6

In this step you link each field of the selected table or view (Source) with the variables used in Sahara to store that information (Target).

You must also indicate the units each data is stored in within the database.

Source	Target	Unit / Format	Subphase
DATE	Date	Day/Month/Year	
DAYS	Production days	Days	
GAS	Gas	Monthly Thousand...	Total
INJ_PRESSURE	Water inj. pressure	Kilograms per squ...	
OIL	Oil	Cubic meters	Total
WATER	Water	Cubic meters	Total
WATER_INJ	Injected Water	Cubic meters	
WELL	Identifier	Name	

If you click the secondary mouse button inside the table you can have Sahara assign automatically the fields that are recognized, and then manually complete the remaining ones.

Step 7

It is possible to define filtering criteria to import only a specific group of data.

This is useful when creating projects from a large database, but only wanting to study a particular field or area.

Filters:

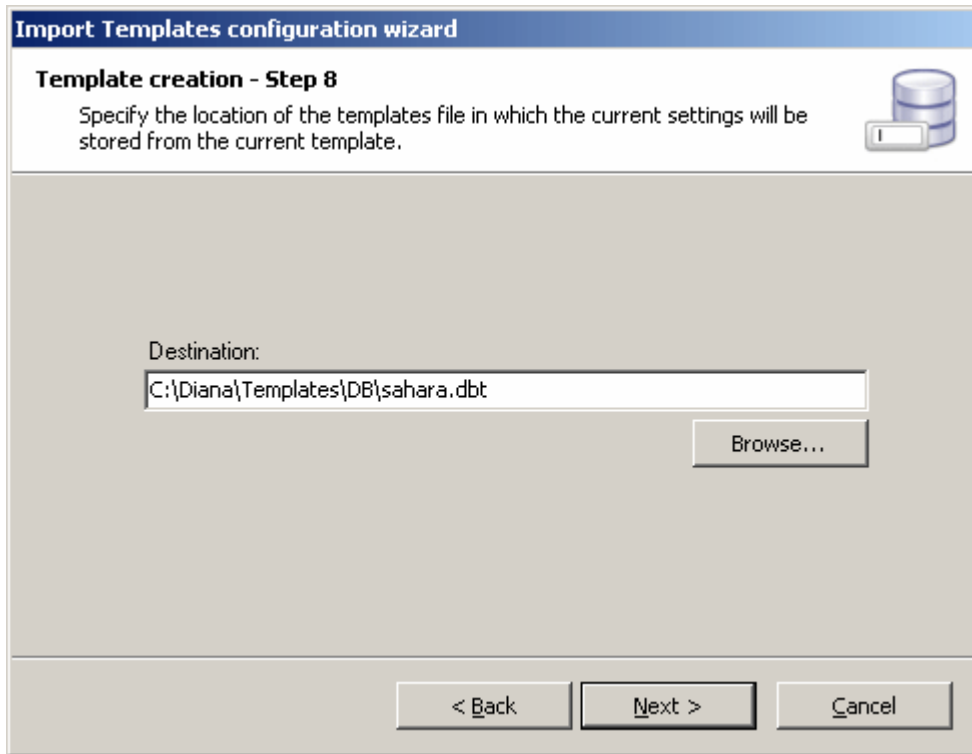
Filter criteria:

Operator: AND Field: Condition: = Value:

Add

Step 8

Now we will indicate the path where the template will be saved. Templates are saved in a template file with a DBT extension.



Important

Template files are independent from Sahara projects.

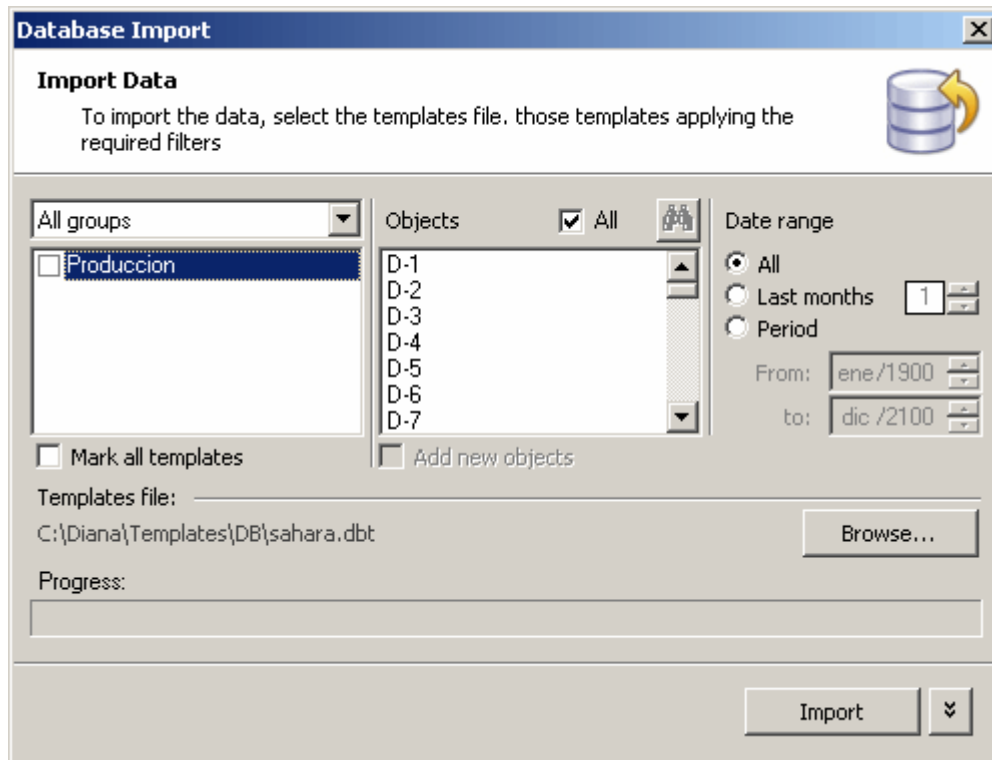
This allows them to be accessed from different projects, as long as they share the data source.

Only the data associated to the active project's wells will be imported when the templates are used.

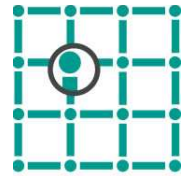
A special case is when the template is being used to import wells. This is when the filters described in step 7 are most useful. This will require creating a different template for each project we want to import wells to, applying filters to make sure only the wells we want to include in the project are imported, eg. Field, Battery, Contract area, etc...

✓ Importing data using templates

To import data using a previously created database template, you must execute the template. This is done selecting **Project > Import > Database**, and selecting the template/s to be imported, and other importing options.



You can select several templates to be imported, the objects that will be revised, and the date span to be considered.



Caloi



Reproduction forbidden