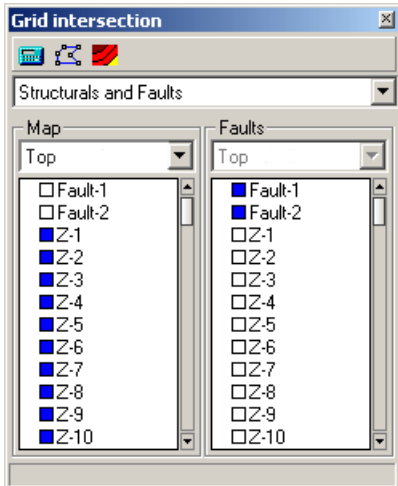
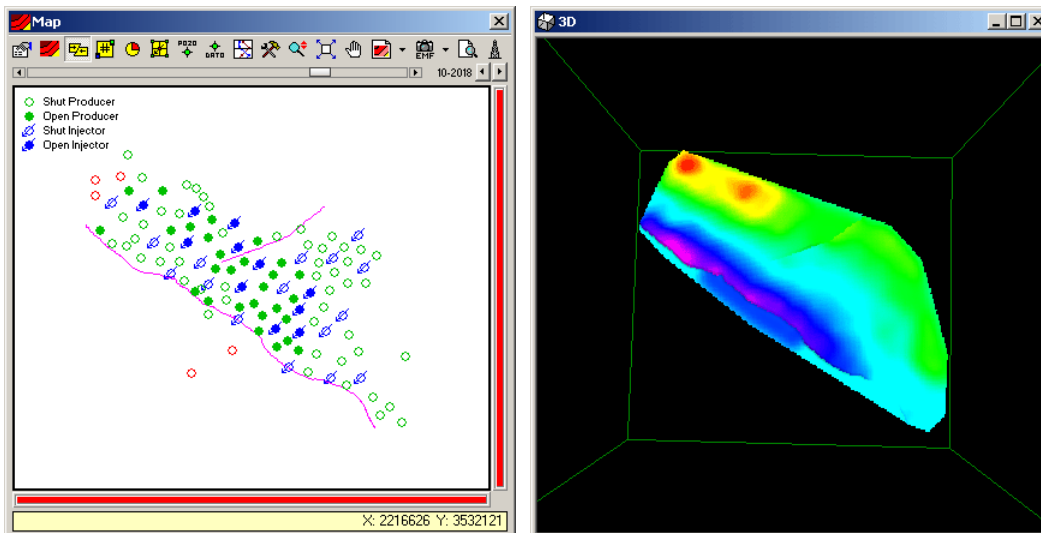


### Grid Intersection

This new window, available in the Tools menu, allows generating polygons as the result of intersecting two grids. This tool was created to generate the fault lines at the top of the layer, reason why these are saved as Fault line variable.



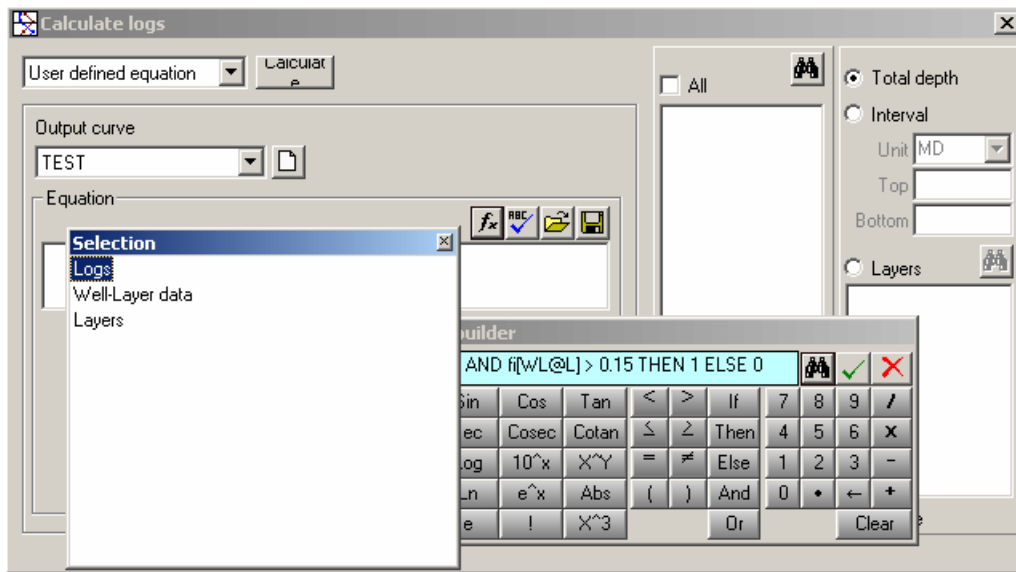
The user must select from the left list which layers are to intersect the fault grids in the right one. Therefore, the faults must be loaded as any other layer and its grids must be loaded as top maps. Using these polygons, mapping structural grids may meet better results.



## Calculate logs using well and well-layer data

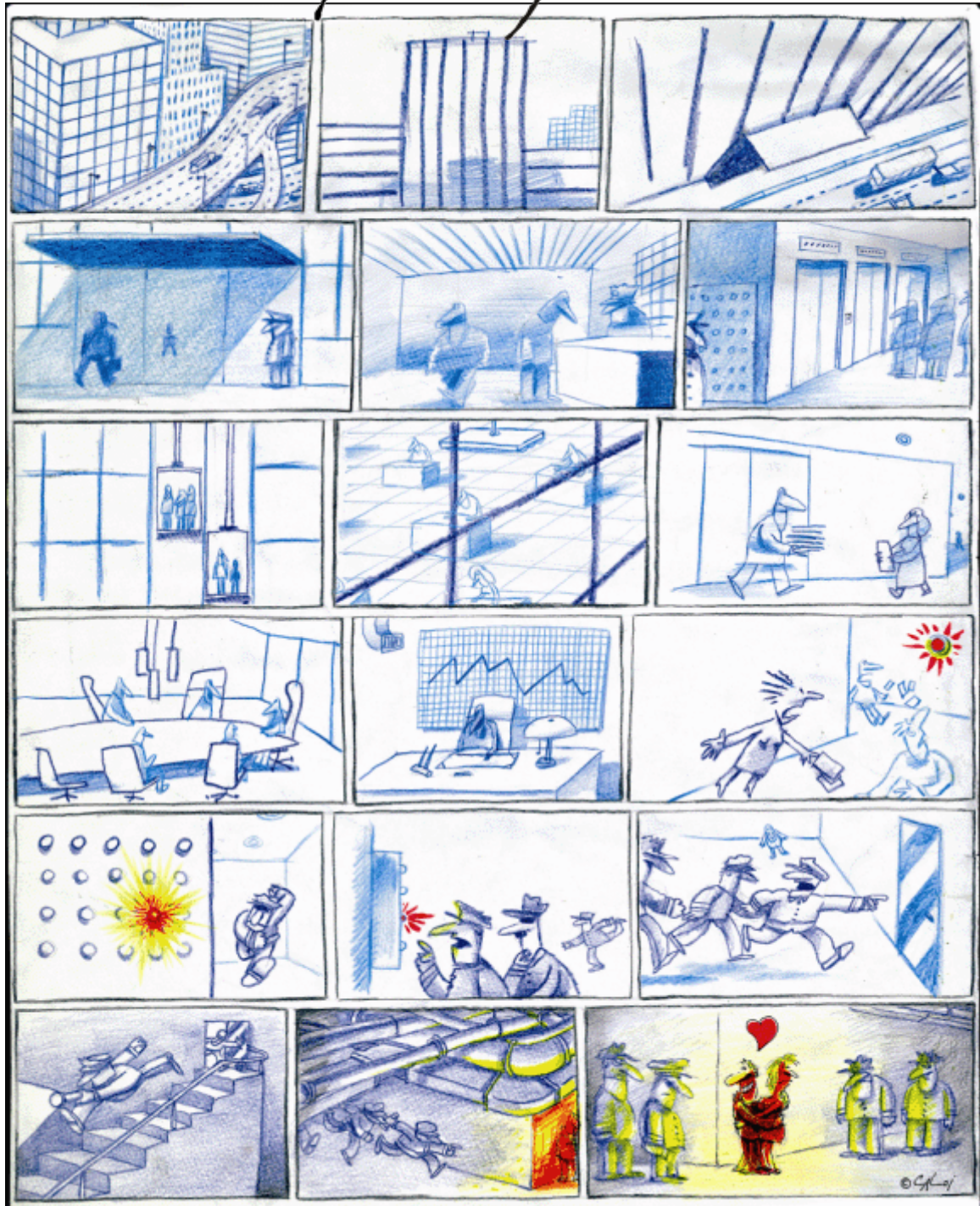
Now you can perform log calculations using well and well-layer data loaded in your Project in user defined equations.

You only have to select them from the list of available variables when you write the equation in the equation editor, and Sahara will use it to calculate the indicated log



# Caloi

Reproduction authorized by Caloi



Reproduction forbidden