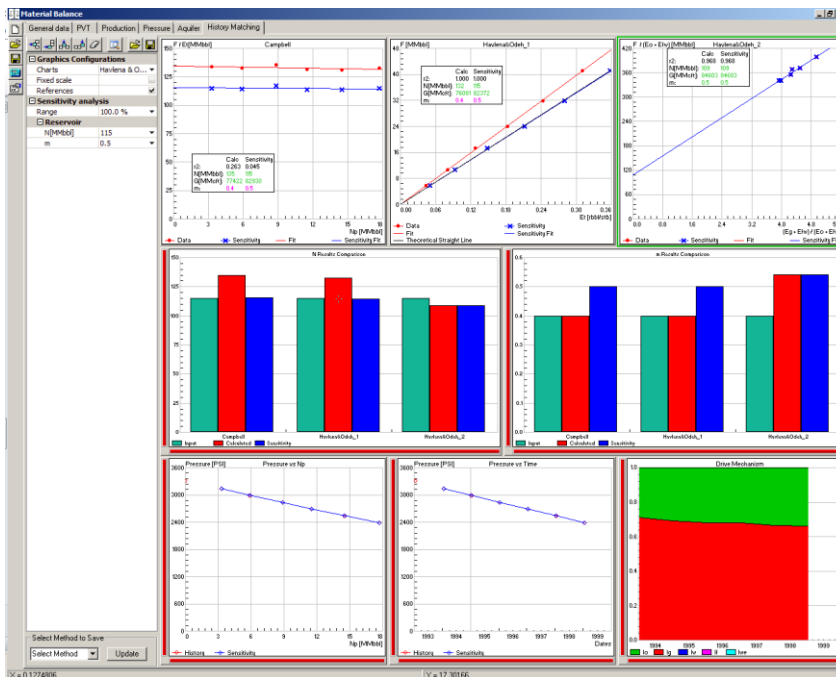
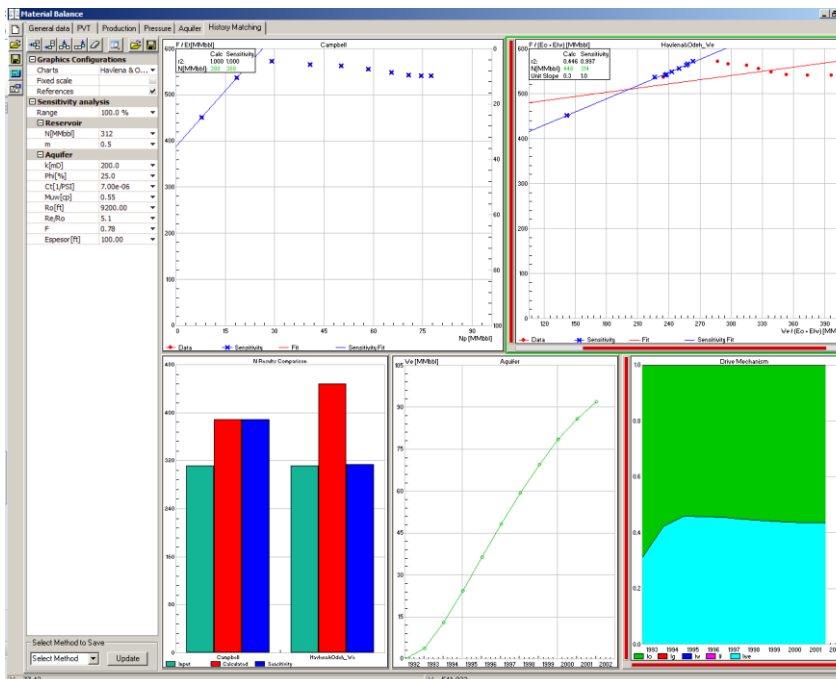


### Material Balance

Sahara's Material Balance tool, accessible from **View > Material Balance** allows fitting historical production data for Black Oil, Dry, Wet and Condensate Gas as well as helping to define the reservoir drive mechanisms. It also provides different methods to estimate original oil/gas in place depending on fluid type and available data.



Several methods are available for each type of fluid. Using a dynamic interface, the user can display, analyze and compare results obtained from different methods. Additionally, using sliders to vary input parameters, allows performing a quick sensitivity analysis.

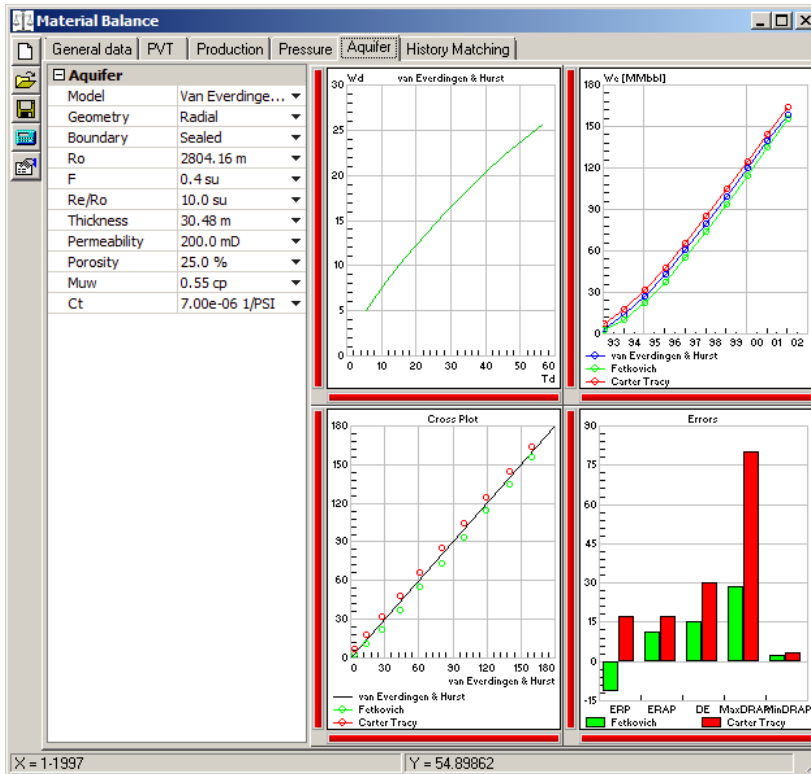


# Aquifers

Water models for different geometries and boundaries are offered:

- van Everdingen & Hurst (1949)
- Carter & Tracy (1960)
- Fetkovich (1961)
- Schilthuis (1936)
- Pot

The water section allows making a comparative study for the different available models, for a given geometry and boundary.



# Caloi

This reproduction is authorized by Caloi



Reproduction forbidden