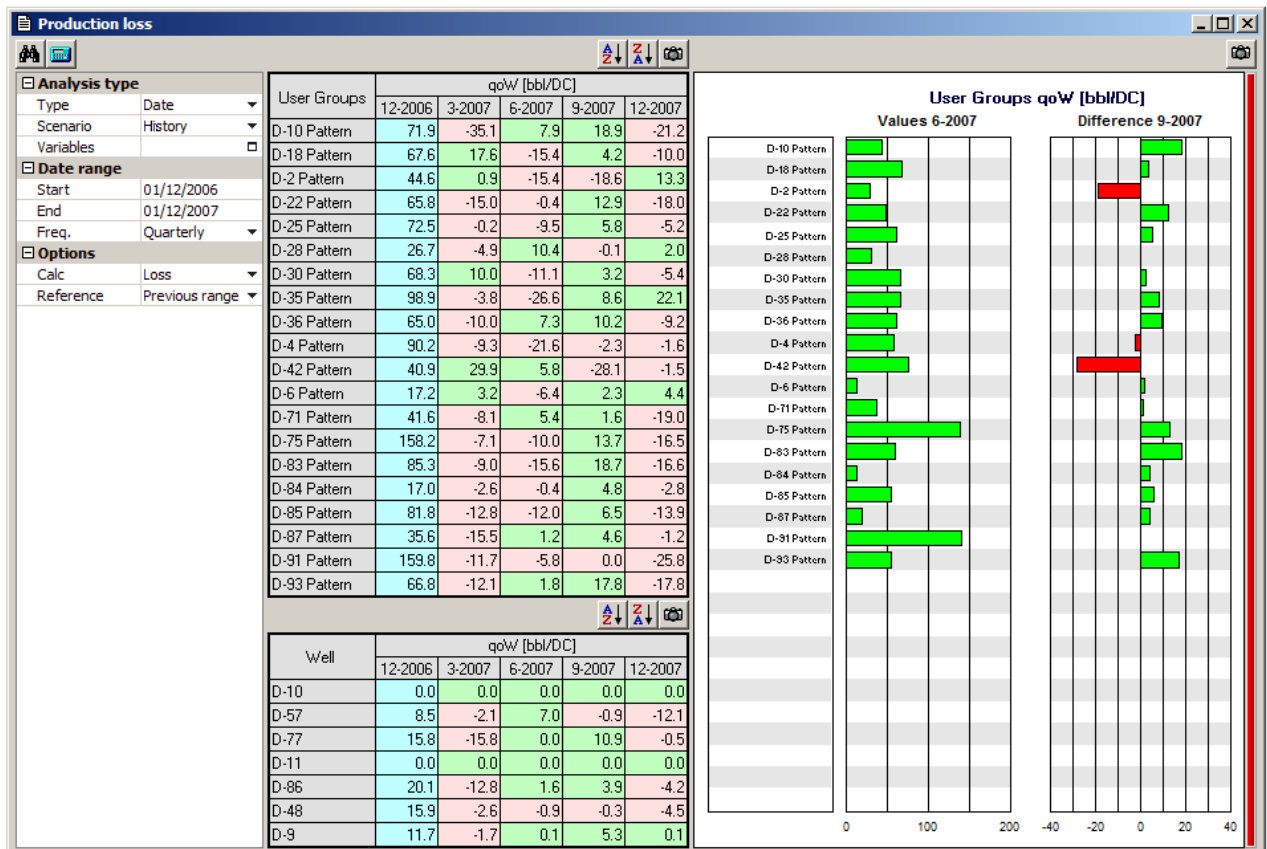


### ▲ Diagnosis: Production Loss

This tool, accesible from **Tools > Diagnosis > Production loss** allows the user to compare production variables using different frequency periods.

The information is displayed as values and differences in tables and bar charts. When clicking on a column of the table, a bar chart shows the information referred to that column.



### Comparing dates or scenarios

The comparison can be done:

- Between different dates in a single scenario: the user can chose the initial date, the last date and the frequency of the periods to be compared. There is an option that allows comparing to the previous period instead to the initial date.
- Between two or more scenarios in different dates: the user can chose both scenarios to be compared and the start and end date.

### Wells and Groups

A selection of wells or group of wells can be done using this button. When using the second option, if one of the groups is selected in the principal chart, a new chart is going to show up below it with the information of the wells that conform that group.

## Functionalities

Any production variable can be selected to do the analysis.

The configuration options let show:

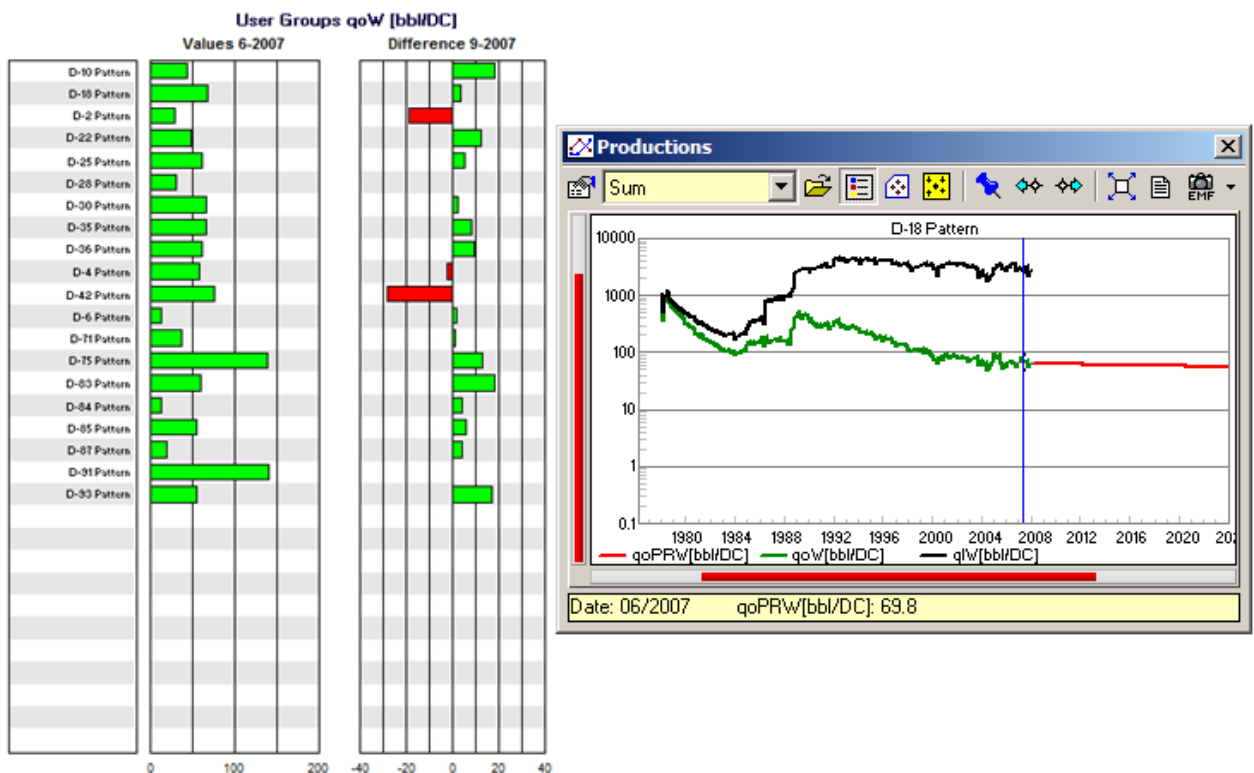
- Rates
- Differences of rates
- Differences percentages

### Increasing or Decreasing Order

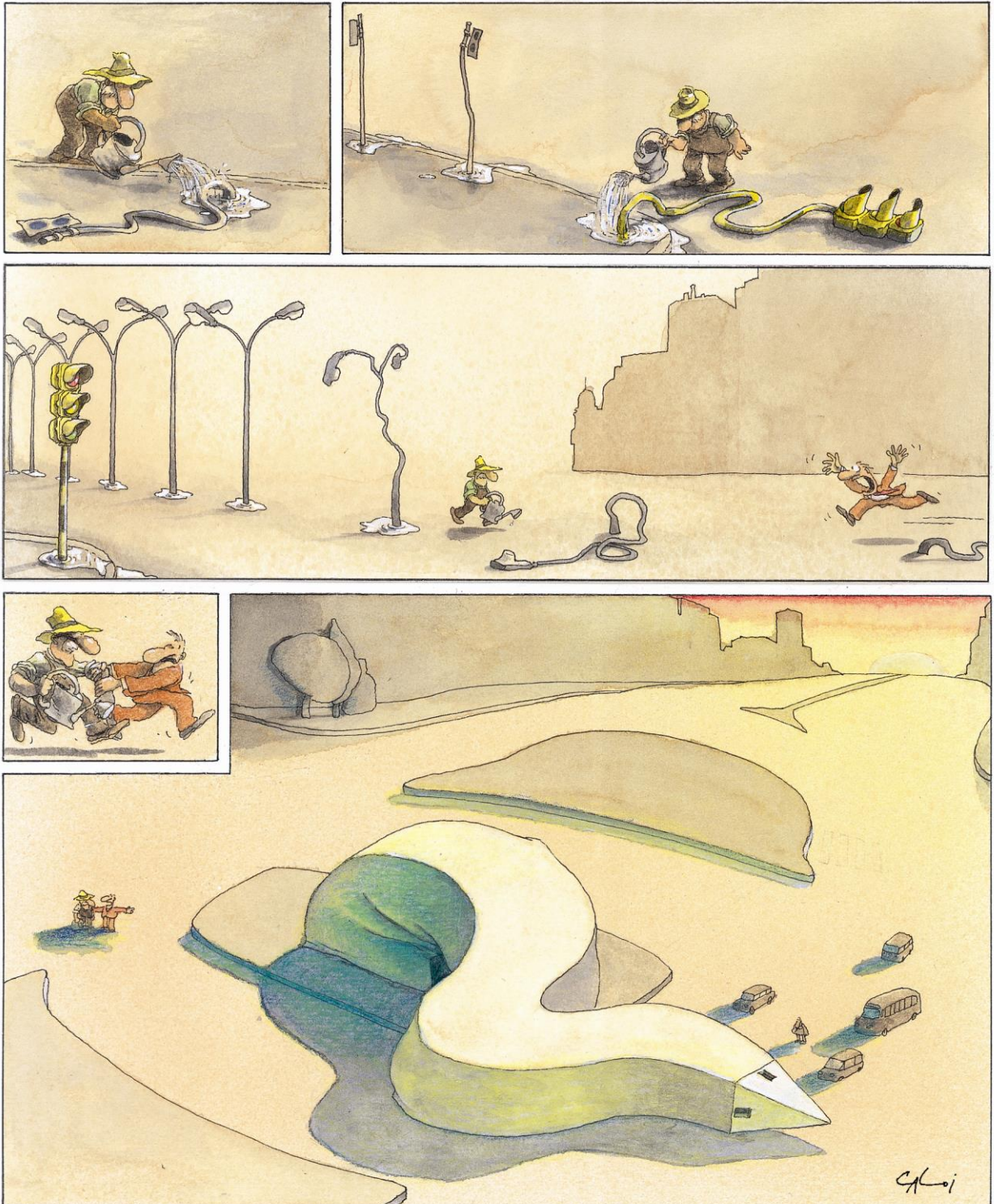
This buttons allows to quickly identify problems by showing the productions or losses in increasing or decreasing order.

### Productions Window

When a group or well is selected, both in charts or plots, the Productions window will show the data configured associated to the selection.



This reproduction is authorized by Caloi



Reproduction forbidden