

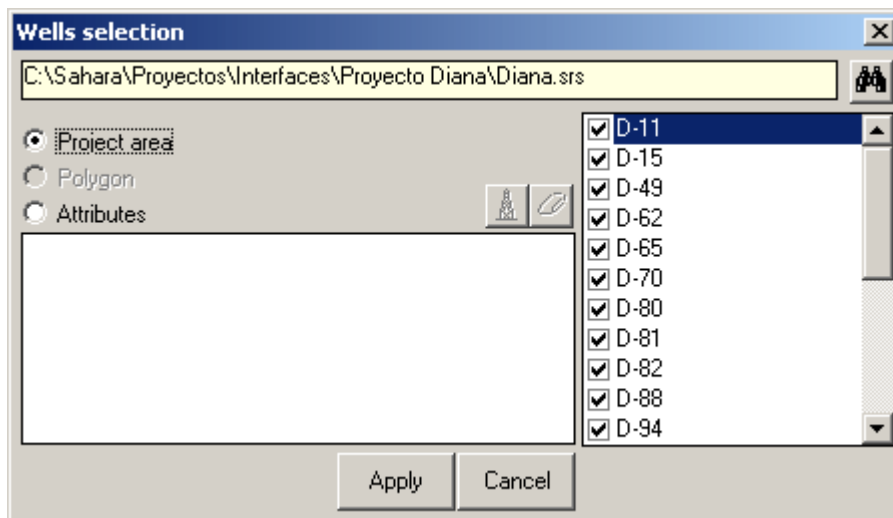
## Project Update

This tool located in the Project menu enables the user to update the wells and its data directly from any other Sahara project.



## New wells

New wells can be easily updated by linking the local project to the remote one. Sahara can search new wells within the area of the local project, using a polygon or by any other attribute the user had previously imported.



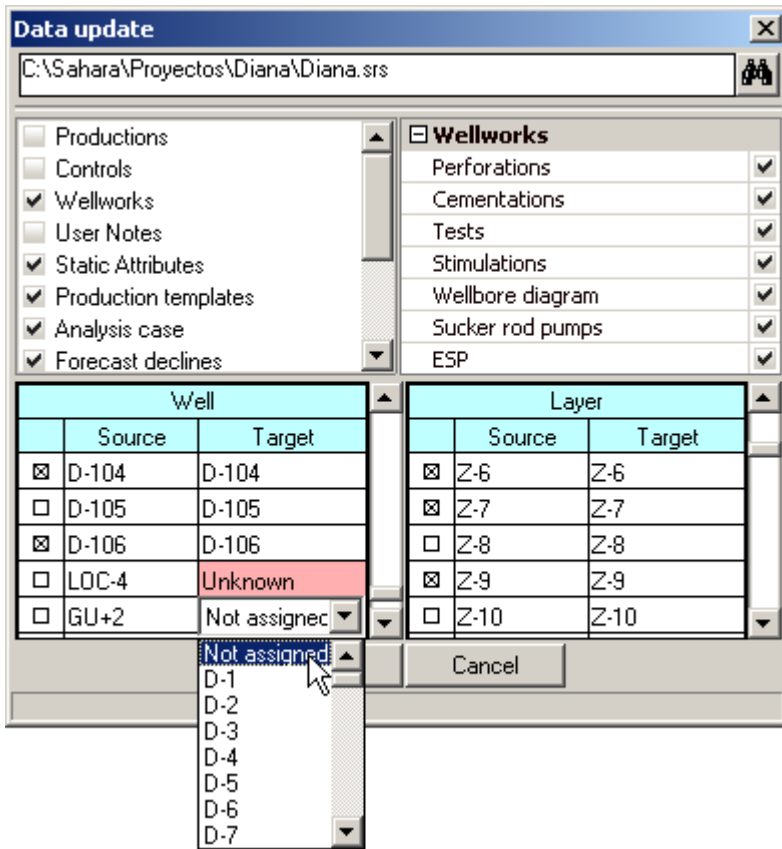
## Well Data

Once new wells have been updated, well data can be loaded for these and the rest of the in the local project. Data groups that may be loaded are:

- Productions
- Production tests
- Wellworks
- User notes
- Static attributes
- Production window templates.
- Declines window analysis cases
- Forecast declines parameters
- Scattered data
- Well-Layer data
- Layer Data
- Deviation surveys.

Each of the previous categories has its own options, which will be displayed in the right side panel when clicked on.

Both Wells and layers are automatically identified. Nevertheless, should any of these change drastically from one project to the other, the user can assign them manually by double clicking on the target cell.



Finally, the user can select which Wells and layers to update by selecting the cross in the left column of each table.

# Caloi

Reproduction authorized by Caloi



Reproduction forbidden