

Shape files importation (GIS)

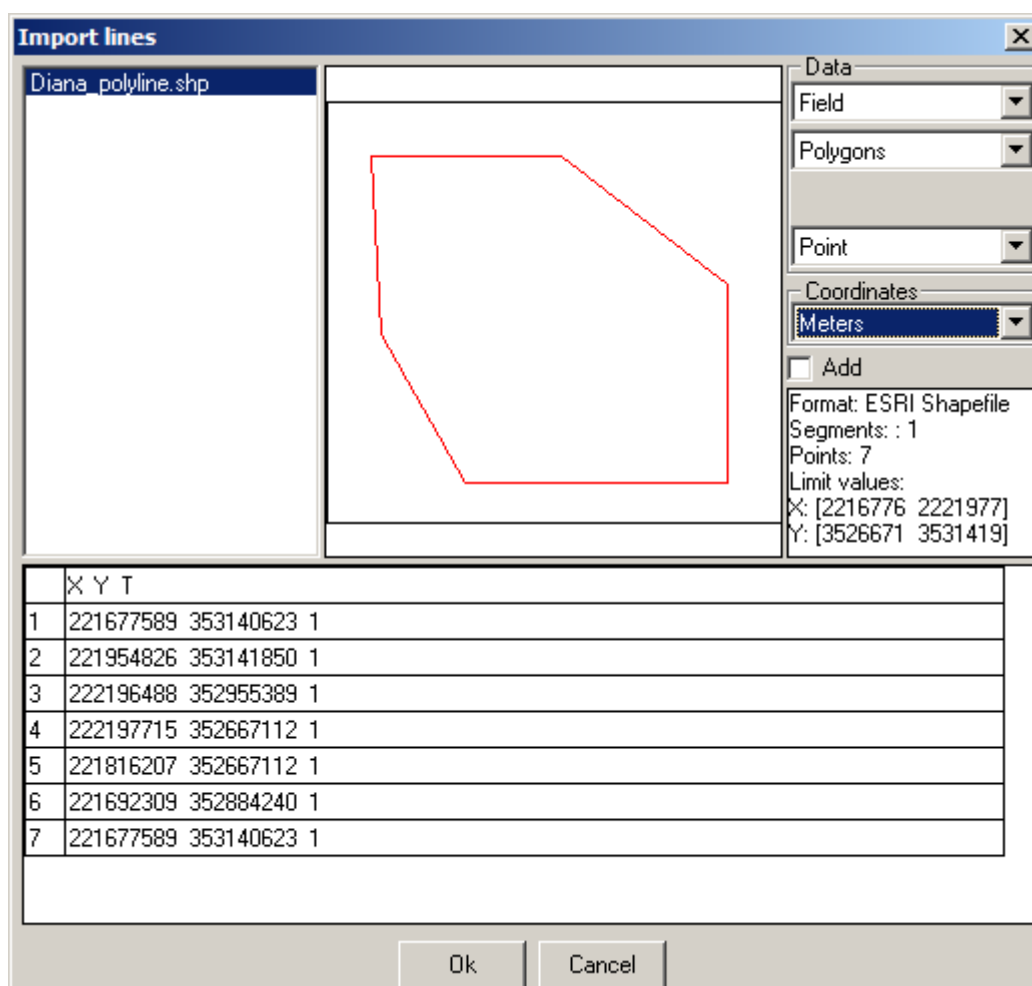
The Geographic Information System (GIS) works with files named Shape to represent georeferenced elements.

Sahara allows loading polyline and polygon type shapefiles which can be associated to a layer or formation or at field level.

Reference System

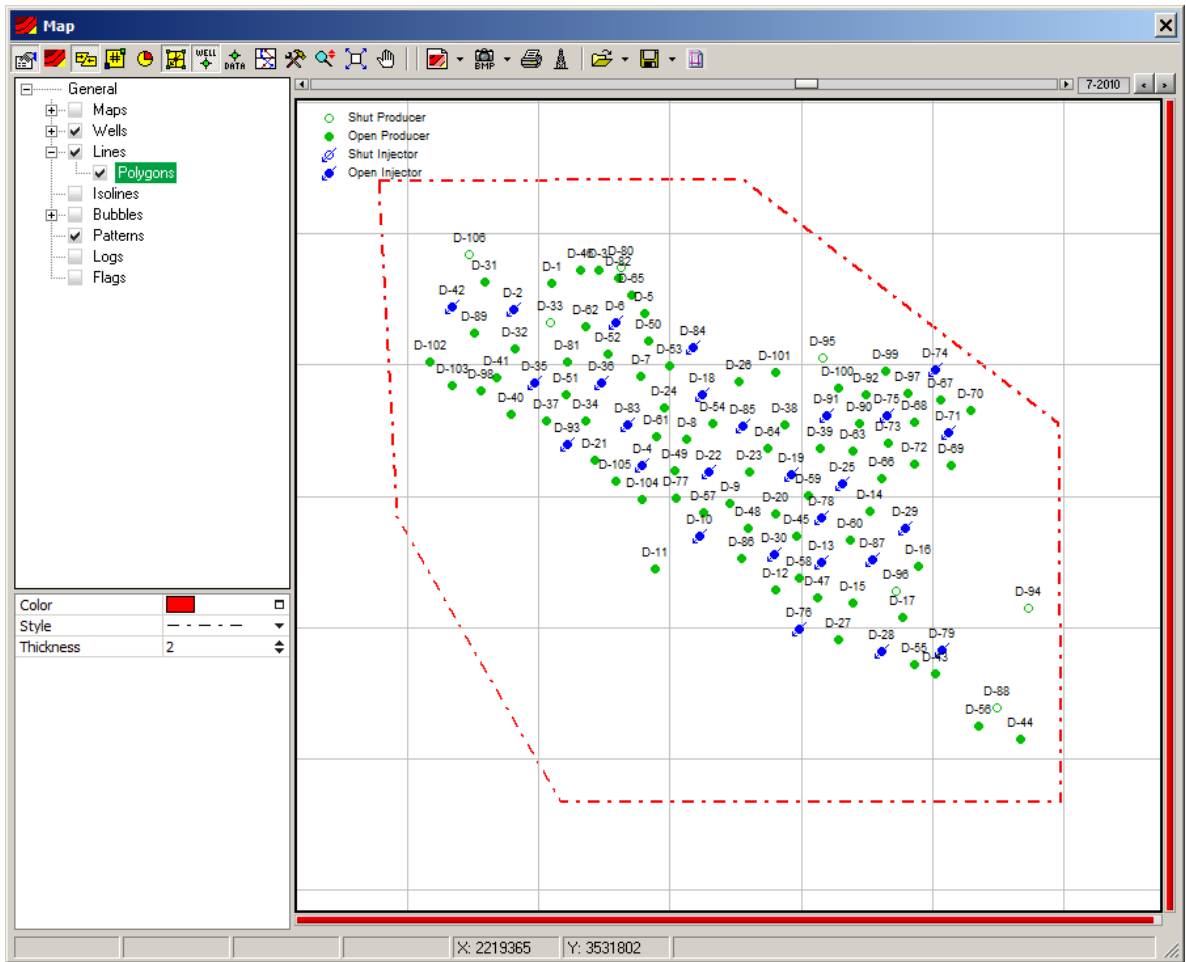
Sahara doesn't handle reference system conversion. This is why the coordinates in the Shape file must be coincident with the project coordinates.

To perform the importation, go to Project > Import > Lines > from Layer and look for the file with .shp extension.

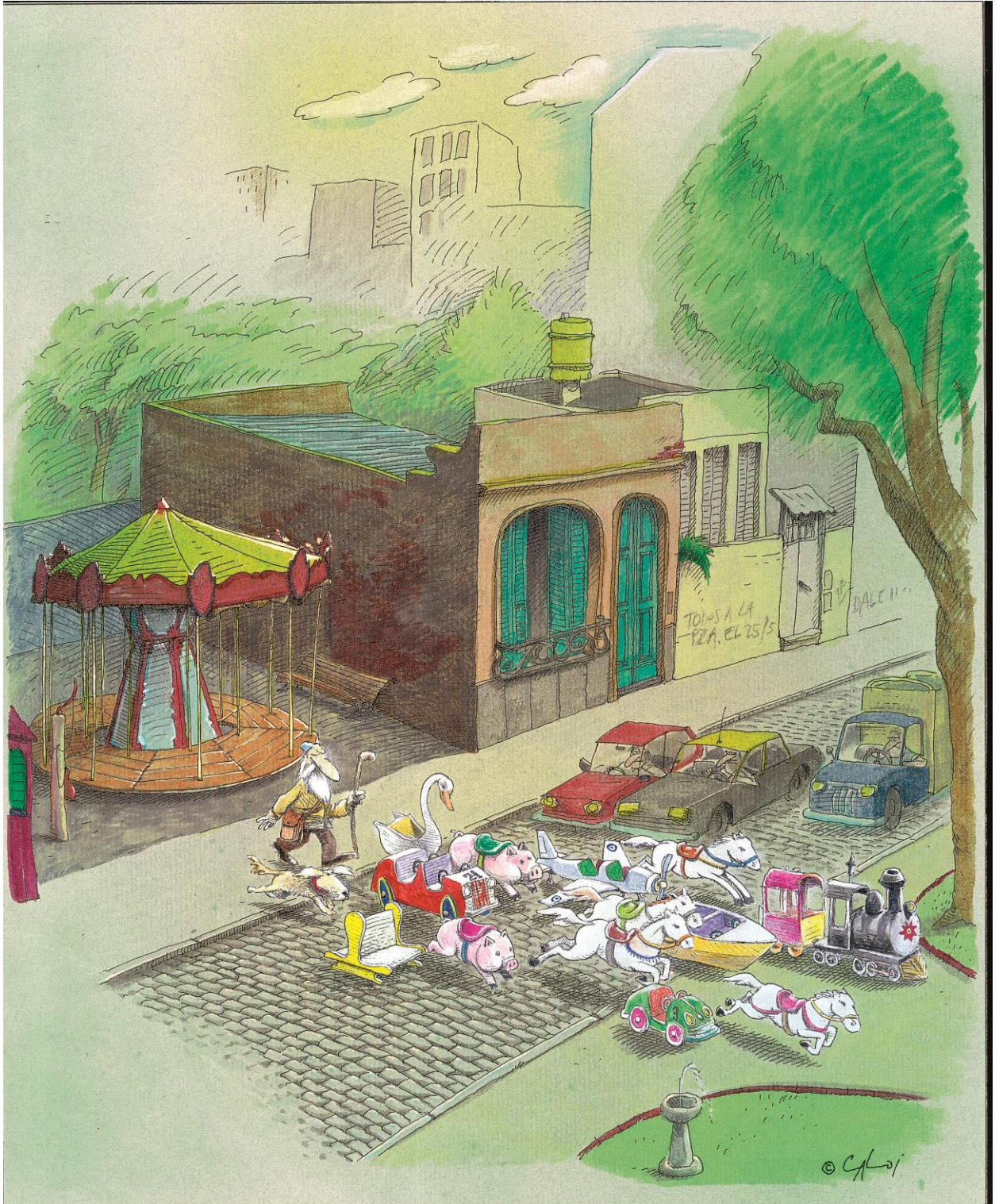


In the preview, the black line represents the project area and the red line is the polyline or polygon to be imported.

The shape file can be displayed in the map window as a line:



This reproduction is authorized by Caloi



Reproduction forbidden