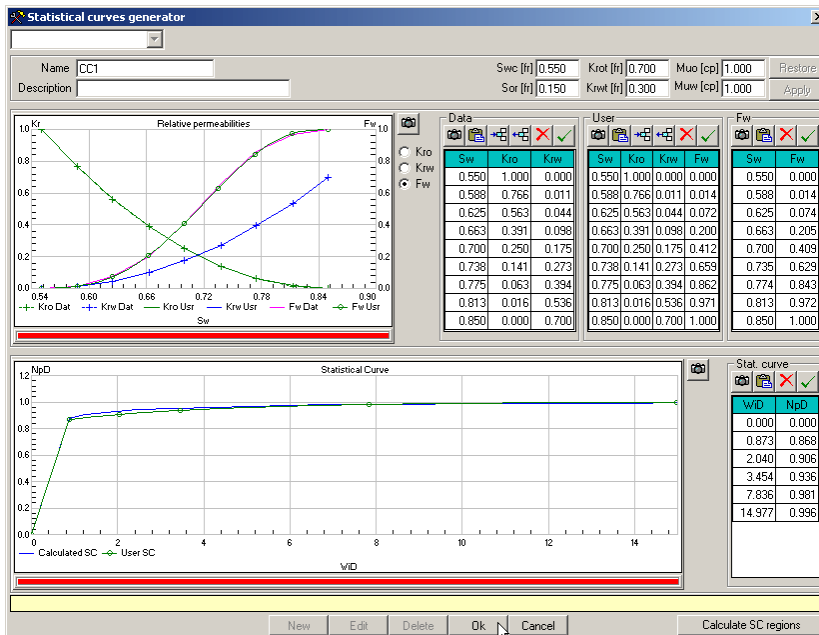


Statistical Curve generator

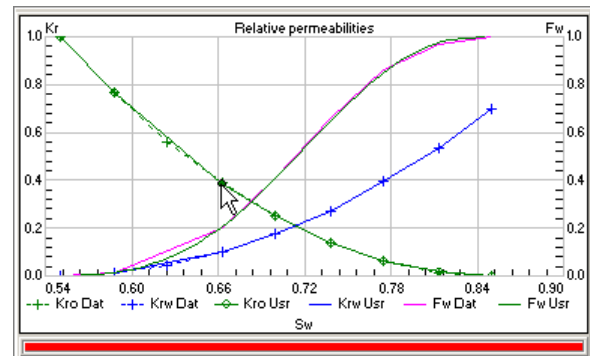
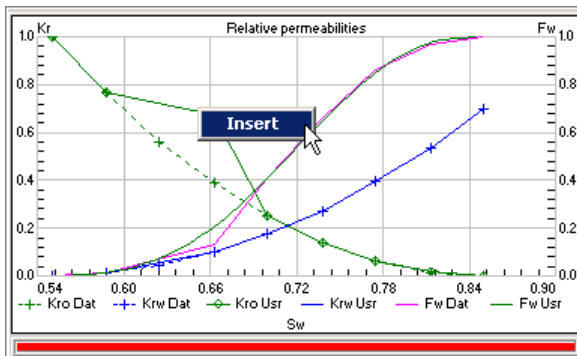
This window which can be accessed from the Simulator menu (advanced submenu), allows to create Statistical curves (NpD vs WiD) from relative permeability data. The former can then be used to run the pattern simulator.



Input Data

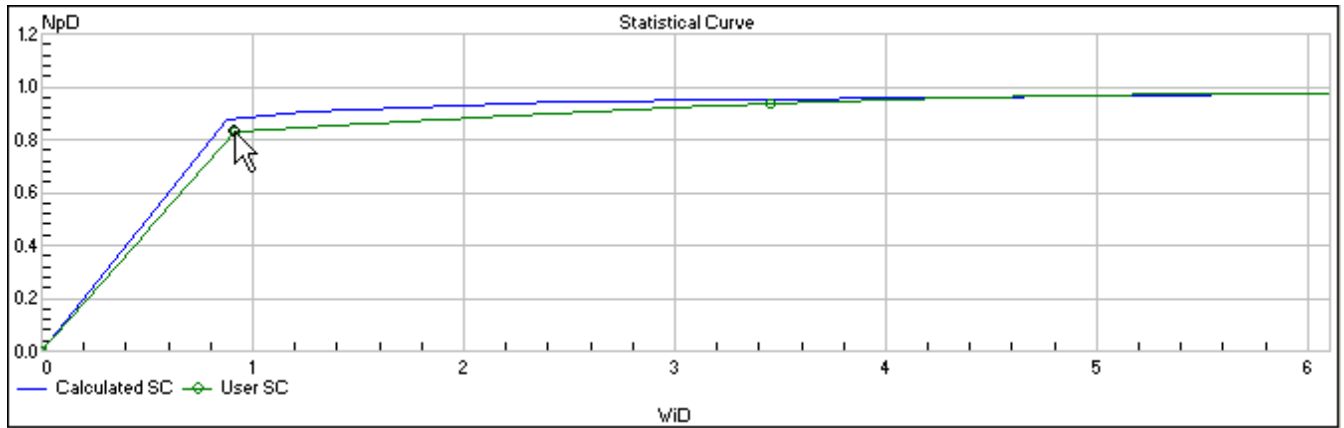
The user can open the Input data window by clicking on the “new” button. The minimum data needed is viscosity and terminal saturation and permeability for both phases.

The first step of the analysis is to fit this previously entered data with user data. This is done by selecting the curve to be fitted, and then inserting and moving the points until a match is obtained. The fractional flow curve is done with a cubic spline which can only be saved when green, as usually in other Sahara windows.



Statistical Curve

From the previous analysis a discrete statistical curve is plotted, which must be fitted with another that honors some continuity and derivability criteria.



Once saved, the curve can be assigned to any layer or region within the project and thus be used to run the pattern simulator.

Caloi



Reproduction forbidden