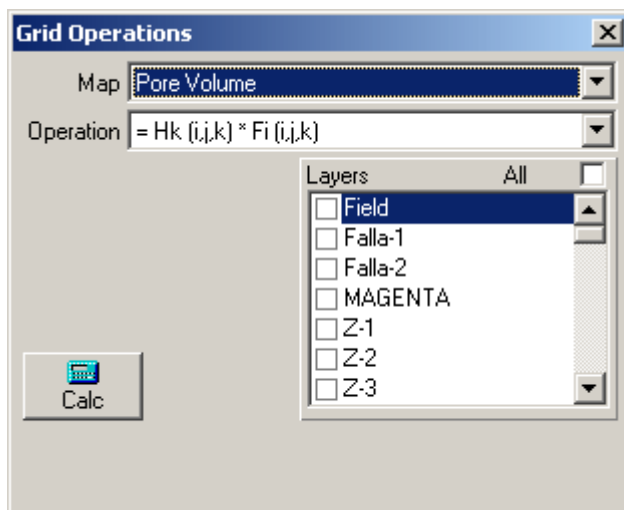


Grid Operations

This window, found in **Tools** menu, allows the user to obtain grids that can be visualized as maps, by performing operations using other grids, average layer data and several other parameters.

In **Grid Operations** the user will find some predefined operations to calculate some frequently used maps, and can add new ones that he/she finds useful.

In the lower panel the user selects the layer to which the operation should be applied. Multiple layers can be selected to apply the same grid operation in one click.



Predefined Grid Operations

There are several maps with predefined operations that can be applied to obtain them. These operations are Sahara's default settings and can't be modified.

For example, if the user wishes to obtain a Pore Volume map, he/she can choose between a number of options using one of the different thicknesses maps (net, gross, net pay) and multiplying it by a porosity value, obtained from maps (i,j,k) or layer data (k)

Adding a Grid Operation

To add a new option in Grid Operations the user must create a new map variable from **Edit → Variables → Maps → New**, assign a name and other required references, and specify it will be a calculated map.

This will allow the user to type in the equation that will be used to calculate the resulting grid of the new map, using project data. Equations can use data from other grids or average layer values, plus the logical operators.

Next time the user accesses **Grid Operations**, the newly created map will be available with its own equation, and to obtain the map he/she will only have to select the grid operation and the layers to apply it to.

Variables

Group: Maps

Type: Data Calculated

Equation:

Grupos: Totalize first and then evaluate Evaluate for each well and then totalize

Name:

Short Name:

Alternate Name:

Alternate Short Name:

Reference:

Units Group:

Equation builder

Arc	Sin	Cos	Tan	<	>	If	7	8	9	/
Hip	Sec	Cosec	Cotan	≤	≥	Then	4	5	6	x
Sqr	Log	10 ^x	X ^Y	=	≠	Else	1	2	3	-
X ²	Ln	e ^x	Abs	()	And	0	.	←	+
Pi	e	!	X ³			Or	<input type="button" value="Clear"/>			

Selection

Maps

- Net Thickness
- Gross Thickness
- Porosity
- Top
- Pore Volume

Layers

Grid Operations

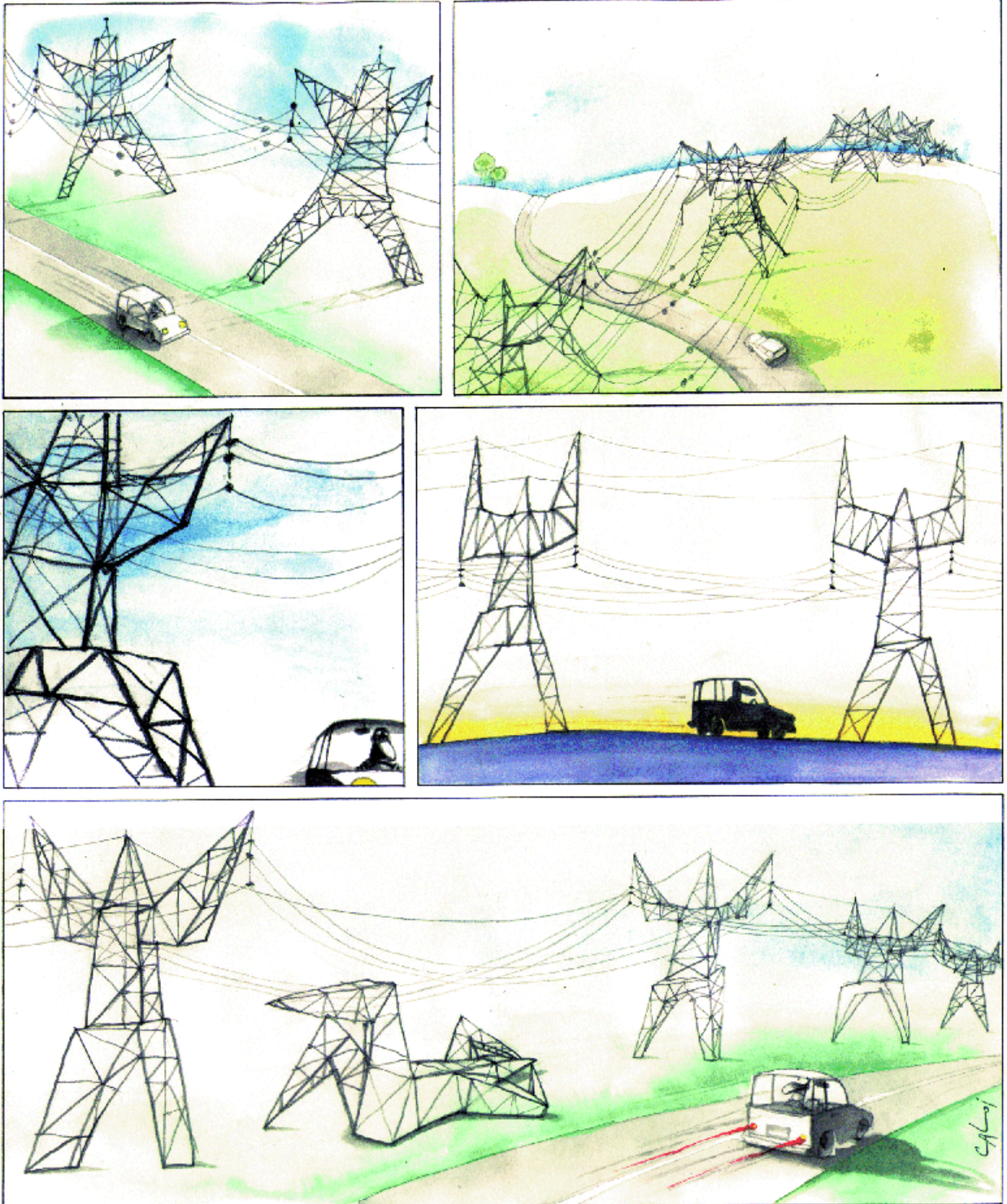
Map:

Operation:

Layers: All

- Field
- Falla-1
- Falla-2
- MAGENTA
- Z-1
- Z-2
- Z-3

This reproduction is authorized by Caloi



Reproduction forbidden